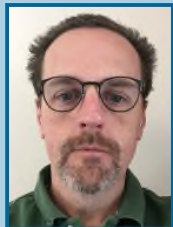


THE CPR REPORT

Providing the most detailed monthly SBA 7(a), 504 and SBIC prepayment, default and market information available anywhere.

VOLUME 12, ISSUE #6 JUNE, 2018

BOB JUDGE, GLS
EDITOR



SPECIAL POINTS OF INTEREST:

- 7a Prepays go above 17%
- Prepays by loan size
- Loan pricing falls

INSIDE THIS ISSUE:

7a Prepays	1-5, 31-39
7a League Tables	1, 10
SBIC Prepays	12-13
FMLP	14-15
SBI Indexes	15-22
504 Prepays	23-25
DCR	26
GLS Value	27-30

Actual 7(a) Prepays Go Above 17%

In June, total prepays, including paid excess principal (ACPR), came in at 17.59%, a 20% increase from last month's reading of 14.69%.

After correcting for the excess principal being released from the MRF, pool prepays (CCPR) came in at 15.35%, up 21% from the previous reading of 12.72%.

Underlying loan level CPRs (LCPR) came in at 17.00%, also up 21% from the prior level of 14.11%.

As for the largest sector in the market, 20+ years to maturity, the ACPR came in at 17.77%, an increase of 18% from the previous reading of 15.05%. The CCPR came in at 15.54% versus 13.31% and the LCPR recorded 17.23%, up from 14.78%, previously.

The CDR calculations came out as follows:

Including excess (ACDR) was 2.79%, pool corrected (CCDR)

was 2.44% and the loan-level (LCDR) was 2.70%.

As for the CRR, they came in as follows:

ACRR: 14.80%, CCRR: 12.91%, LCRR: 14.30%.

Regarding our maturity buckets, we saw 6 out of 7 buckets increase.

By order of magnitude, increases

Continued on page 2. Charts begin on page 3 and continue on page 31

7(a) Pooling League Tables

Through May, SunTrust continues to lead for ALL POOLS, totaling \$908 million. They were followed by Signature with \$460MM and FTN Financial with \$452MM. Totals for all assembled pools was \$3.131 billion.

Turning to the second largest issuance maturity bucket, 10-13 year pools, SunTrust maintained the lead with a five month total of \$194 million, followed by FTN

Financial with \$176MM and KGS Alpha with \$161MM. YTD totals were \$1,083MM.

As for the largest issuance bucket, 20+ years to maturity, SunTrust continues as number one with \$648MM, followed by Signature (\$265MM), Stifel (\$249MM) and FTN (\$202). Totals in the long-end were \$1.762 billion.

As for fixed rate pools, JVB con-

tinues to lead with \$11MM, followed by FTN with \$7MM. YTD totals for fixed rate pools is \$18MM.

For further information on the terminology and concepts used in this article, please refer to the "Glossary and Definitions" at the end of the report.

Data on page 10

Master Reserve Fund Watch

As of the June Factor Report, we estimate the principal shortfall in the MRF to be \$2.99 billion. This month saw \$67 million of excess paid out and since last October, the cumulative total is \$579 million.

7(a) Prepayment Speeds Commentary...Continued

were seen in the actual data in 16-20 (+43% to ACPR 17.76%), 8-10 (+30% to ACPR 19.12%), 10-13 (+23% to ACPR 16.67%), 20+ (+18% to ACPR 17.77%), <8 (+15% to ACPR 25.67%) and 13-16 (+8% to ACPR 24.74%).

The lone decrease was seen in Fixed Rates, falling by 21% to ACPR 10.80%.

As for the CCPR, we also saw 6 buckets increase, with the largest one being 16-20 (+46% to CCPR 15.54%), 8-10 (+35% to CCPR 16.78%), 10-13 (+30% to CCPR 14.46%), <8 (+29% to CCPR 22.04%), 20+ (+17% to CCPR 15.54%) and 13-16 (+6% to CCPR 21.74%).

The lone decrease was also seen

in Fixed Rates, falling by 21% to CCPR 10.37%.

Lastly, for the LCPR, we also witnessed 6 increases, led by 16-20 (+46% to LCPR 18.27%), 8-10 (+34% to LCPR 18.55%), 10-13 (+30% to LCPR 15.91%), <8 (+29% to LCPR 24.63%), 20+ (+17% to LCPR 17.23%) and 13-16 (+5% to LCPR 23.32%).

The lone decrease was also seen in Fixed Rates, falling by 21% to LCPR 11.00%.

This month represents a significant move upwards in prepayment speeds led by voluntary payoffs and preliminary data suggests next month should be similar.

For further information on the terminology and concepts used in this article, please refer to the "Glossary and Definitions" at the end of the report.

"This month represents a significant move upwards in prepayment speeds led by voluntary payoffs and preliminary data suggests next month should be similar."

Data starts on page 3 and continues on page 31



GLS

GOVERNMENT LOAN SOLUTIONS

The nationwide leader in the valuation of SBA and USDA assets.

GLS provides valuations for:

- **SBA 7(a), 504 1st mortgage and USDA servicing rights**
- **SBA 7(a) and 504 1st mortgage pools**
- **Guaranteed and non-guaranteed 7(a) loan portions Interest-only portions of SBA and USDA loans**

In these times of market uncertainty, let GLS help you in determining the value of your SBA and USDA related-assets.

For further information, please contact Bob Judge at (216) 456-2480 ext. 133 or at

7(a) YTD Prepayment Speeds

Actual prepayments versus actual pool trading balances

ACT CPR	<8	8 - 10	10 - 13	13 - 16	16 - 20	20+	FIXED	ALL
Oct-17	13.57%	12.27%	13.33%	24.72%	12.96%	15.23%	4.40%	14.64%
Nov-17	15.93%	11.25%	13.83%	11.11%	14.65%	15.40%	1.15%	14.71%
Dec-17	16.00%	15.59%	12.43%	7.30%	11.76%	14.09%	17.61%	13.52%
Jan-18	22.29%	14.32%	12.59%	11.95%	17.02%	14.58%	33.11%	14.30%
Feb-18	13.90%	19.63%	13.22%	7.39%	12.17%	14.70%	16.35%	14.18%
Mar-18	22.23%	15.64%	11.51%	7.28%	14.70%	12.00%	6.74%	11.96%
Apr-18	16.52%	17.89%	14.15%	15.50%	10.43%	16.28%	11.87%	15.47%
May-18	22.29%	14.75%	13.53%	23.01%	12.39%	15.05%	13.75%	14.69%
Jun-18	25.67%	19.12%	16.67%	24.74%	17.76%	17.77%	10.80%	17.59%
Grand Total	18.66%	15.76%	13.49%	15.24%	13.77%	15.02%	13.34%	14.57%

Corrected prepayments versus corrected pool trading balances

COR CPR	<8	8 - 10	10 - 13	13 - 16	16 - 20	20+	FIXED	ALL
Oct-17	10.47%	10.24%	10.76%	19.20%	10.89%	12.90%	4.35%	12.21%
Nov-17	12.96%	8.90%	10.98%	9.09%	12.33%	13.38%	0.93%	12.45%
Dec-17	13.46%	12.22%	9.86%	6.99%	9.93%	12.29%	16.05%	11.50%
Jan-18	16.34%	10.10%	9.98%	10.76%	13.40%	12.93%	30.90%	12.25%
Feb-18	10.93%	16.78%	10.75%	5.11%	10.66%	12.54%	16.39%	11.95%
Mar-18	19.75%	12.12%	9.44%	6.35%	12.22%	10.73%	5.93%	10.39%
Apr-18	13.37%	14.20%	11.65%	13.64%	9.46%	14.07%	10.59%	13.20%
May-18	17.02%	12.45%	11.12%	20.42%	10.64%	13.31%	13.15%	12.72%
Jun-18	22.04%	16.78%	14.46%	21.74%	15.54%	15.54%	10.37%	15.35%
Grand Total	15.11%	12.82%	11.02%	12.94%	11.67%	13.09%	12.49%	12.46%

Corrected prepayments versus underlying loan trading balances

LOAN CPR	<8	8 - 10	10 - 13	13 - 16	16 - 20	20+	FIXED	ALL
Oct-17	11.99%	11.81%	12.00%	21.06%	12.79%	14.45%	4.65%	13.68%
Nov-17	14.80%	10.29%	12.22%	10.04%	14.49%	14.96%	0.99%	13.92%
Dec-17	15.36%	14.08%	10.96%	7.71%	11.70%	13.73%	17.02%	12.85%
Jan-18	18.59%	11.65%	11.06%	11.84%	15.76%	14.43%	32.62%	13.66%
Feb-18	12.43%	18.81%	11.89%	5.63%	12.57%	13.99%	17.39%	13.32%
Mar-18	22.27%	13.59%	10.44%	6.98%	14.38%	11.96%	6.32%	11.57%
Apr-18	15.11%	15.83%	12.86%	14.90%	11.17%	15.64%	11.24%	14.66%
May-18	19.11%	13.84%	12.26%	22.12%	12.55%	14.78%	13.95%	14.11%
Jun-18	24.63%	18.55%	15.91%	23.32%	18.27%	17.23%	11.00%	17.00%
Grand Total	17.14%	14.49%	12.20%	14.16%	13.75%	14.59%	13.26%	13.88%

7(a) YTD Prepayment Speeds

Loan-level prepayments by maturity bucket and guaranteed portion size at time of sale into the Secondary Market

ALL	<250	250-500	500-1mm	1-1.5mm	1.5-2mm	2-2.5mm	2.5-3mm	3-3.5mm	3.5-4mm	4mm+
Nov-17	15.30%	12.31%	16.36%	16.25%	13.77%	13.10%	20.85%	11.26%	17.37%	0.58%
Dec-17	12.68%	12.44%	13.92%	16.98%	15.09%	14.37%	17.25%	15.55%	20.97%	25.23%
Jan-18	15.41%	15.68%	16.23%	18.13%	14.33%	11.90%	17.13%	22.07%	11.94%	2.85%
Feb-18	13.49%	12.71%	12.91%	14.17%	11.66%	11.08%	11.39%	20.72%	10.65%	0.17%
Mar-18	17.56%	14.89%	16.98%	18.39%	16.27%	15.73%	18.28%	0.86%	5.36%	21.88%
Apr-18	15.24%	16.20%	14.83%	14.28%	17.60%	20.70%	16.77%	22.94%	15.31%	41.16%
May-18	15.78%	17.78%	17.74%	22.26%	17.97%	20.62%	11.96%	18.45%	21.96%	0.20%
Jun-18	16.82%	18.73%	20.79%	18.08%	25.65%	16.89%	15.18%	16.93%	17.52%	25.24%
Grand Total	15.31%	15.14%	16.24%	17.35%	16.70%	15.67%	16.08%	16.37%	15.29%	16.40%

<8	<250	250-500	500-1mm	1-1.5mm	1.5-2mm	2-2.5mm	2.5-3mm	3-3.5mm	3.5-4mm	4mm+
Nov-17	22.23%	18.01%	20.50%	20.44%	9.33%	0.00%	0.00%	0.00%	0.00%	0.00%
Dec-17	16.02%	22.73%	5.48%	32.66%	4.86%	0.00%	0.00%	0.00%	0.00%	0.00%
Jan-18	15.72%	29.47%	38.60%	15.18%	0.00%	0.00%	0.00%	0.00%	0.00%	0.00%
Feb-18	18.31%	23.10%	13.88%	6.62%	99.35%	0.00%	0.00%	0.00%	0.00%	0.00%
Mar-18	22.80%	25.36%	12.92%	17.60%	0.00%	0.00%	0.00%	0.00%	0.00%	0.00%
Apr-18	20.57%	8.18%	24.92%	41.65%	0.00%	0.00%	0.00%	0.00%	0.00%	0.00%
May-18	23.26%	13.28%	25.16%	66.16%	7.21%	0.00%	0.00%	0.00%	0.00%	0.00%
Jun-18	19.83%	24.99%	57.55%	21.78%	0.00%	0.00%	0.00%	0.00%	0.00%	0.00%
Grand Total	19.86%	20.94%	26.24%	29.68%	48.84%	0.00%	0.00%	0.00%	0.00%	0.00%

7(a) YTD Prepayment Speeds

Loan-level prepayments by maturity bucket and guaranteed portion size at time of sale into the Secondary Market

8-10	<250	250-500	500-1mm	1-1.5mm	1.5-2mm	2-2.5mm	2.5-3mm	3-3.5mm	3.5-4mm	4mm+
Nov-17	20.08%	13.80%	16.31%	0.00%	0.00%	0.00%	0.00%	0.00%	0.00%	0.00%
Dec-17	14.65%	7.42%	77.25%	0.00%	0.00%	0.00%	0.00%	0.00%	0.00%	0.00%
Jan-18	25.79%	54.79%	99.24%	0.00%	10.44%	0.00%	0.00%	0.00%	0.00%	0.00%
Feb-18	9.82%	16.18%	0.00%	0.00%	0.00%	0.00%	0.00%	0.00%	0.00%	0.00%
Mar-18	23.11%	52.71%	0.00%	0.00%	0.00%	0.00%	0.00%	0.00%	0.00%	0.00%
Apr-18	12.58%	1.09%	0.00%	0.00%	0.00%	0.00%	0.00%	0.00%	0.00%	0.00%
May-18	29.69%	24.17%	0.00%	0.00%	0.00%	0.00%	0.00%	0.00%	0.00%	0.00%
Jun-18	12.48%	7.44%	2.23%	0.00%	6.39%	0.00%	0.00%	0.00%	0.00%	0.00%
Grand Total	18.81%	25.37%	59.14%	0.00%	2.17%	0.00%	0.00%	0.00%	0.00%	0.00%

10-13	<250	250-500	500-1mm	1-1.5mm	1.5-2mm	2-2.5mm	2.5-3mm	3-3.5mm	3.5-4mm	4mm+
Nov-17	14.53%	12.17%	14.00%	20.05%	15.82%	13.01%	8.36%	2.38%	14.30%	0.00%
Dec-17	12.16%	12.13%	14.96%	11.24%	13.56%	21.57%	2.23%	8.99%	20.77%	0.00%
Jan-18	15.12%	15.77%	19.23%	18.21%	8.82%	15.15%	22.05%	17.52%	2.43%	0.00%
Feb-18	13.70%	12.30%	11.85%	14.78%	14.59%	20.35%	9.27%	12.88%	0.37%	0.00%
Mar-18	17.14%	12.85%	16.05%	13.68%	10.12%	11.43%	5.34%	3.65%	12.53%	3.53%
Apr-18	16.00%	16.86%	14.03%	14.43%	18.62%	12.73%	9.36%	17.16%	13.03%	0.00%
May-18	14.44%	17.28%	20.28%	24.76%	12.74%	13.76%	7.89%	29.02%	24.78%	0.84%
Jun-18	15.91%	19.94%	20.53%	12.78%	25.07%	21.99%	26.34%	3.21%	16.22%	0.00%
Grand Total	14.91%	15.01%	16.46%	16.35%	15.11%	16.36%	11.95%	12.41%	13.39%	0.55%

7(a) YTD Prepayment Speeds

Loan-level prepayments by maturity bucket and guaranteed portion size at time of sale into the Secondary Market

13-16	<250	250-500	500-1mm	1-1.5mm	1.5-2mm	2-2.5mm	2.5-3mm	3-3.5mm	3.5-4mm	4mm+
Nov-17	19.15%	17.93%	9.53%	29.98%	2.82%	0.00%	0.73%	2.59%	2.92%	1.57%
Dec-17	23.74%	15.94%	15.61%	16.90%	22.87%	0.87%	72.53%	1.12%	2.48%	0.46%
Jan-18	17.36%	21.87%	16.88%	15.04%	5.20%	0.96%	1.80%	0.74%	0.40%	0.00%
Feb-18	10.64%	10.47%	14.97%	8.50%	4.32%	1.22%	53.39%	0.72%	0.00%	0.00%
Mar-18	19.42%	15.86%	24.43%	21.11%	13.15%	19.57%	0.00%	0.97%	0.94%	0.00%
Apr-18	20.77%	24.59%	16.02%	20.84%	36.18%	8.46%	1.57%	49.38%	56.74%	0.00%
May-18	21.13%	25.19%	29.20%	6.22%	15.66%	29.18%	0.72%	52.65%	0.12%	0.00%
Jun-18	15.69%	22.09%	15.53%	18.28%	1.26%	6.98%	0.35%	43.15%	0.26%	0.00%
Grand Total	18.59%	19.29%	17.87%	17.50%	13.34%	8.82%	23.38%	22.12%	10.41%	0.25%

16-20	<250	250-500	500-1mm	1-1.5mm	1.5-2mm	2-2.5mm	2.5-3mm	3-3.5mm	3.5-4mm	4mm+
Nov-17	25.71%	16.91%	21.94%	11.83%	0.15%	1.93%	71.78%	0.00%	1.26%	0.00%
Dec-17	10.07%	20.42%	0.99%	22.62%	1.29%	0.00%	48.30%	0.80%	88.12%	0.00%
Jan-18	42.41%	29.01%	6.96%	2.34%	2.92%	1.23%	1.38%	0.76%	0.00%	0.00%
Feb-18	12.09%	17.34%	16.81%	20.85%	24.86%	0.51%	0.59%	0.00%	0.00%	0.00%
Mar-18	18.96%	20.53%	1.94%	20.90%	47.75%	65.47%	89.10%	0.88%	0.00%	0.00%
Apr-18	33.70%	15.70%	8.64%	20.67%	19.00%	0.73%	0.00%	0.53%	0.78%	0.00%
May-18	27.71%	25.89%	12.76%	29.68%	1.02%	0.43%	0.00%	64.33%	1.18%	0.00%
Jun-18	10.63%	31.27%	19.00%	8.88%	87.57%	0.16%	1.09%	0.61%	0.83%	0.00%
Grand Total	23.55%	22.24%	11.40%	17.54%	32.17%	13.52%	41.96%	14.96%	25.07%	0.00%

7(a) YTD Prepayment Speeds

Loan-level prepayments by maturity bucket and guaranteed portion size at time of sale into the Secondary Market

20+	<250	250-500	500-1mm	1-1.5mm	1.5-2mm	2-2.5mm	2.5-3mm	3-3.5mm	3.5-4mm	4mm+
Nov-17	15.52%	11.89%	17.14%	14.75%	14.23%	14.07%	21.59%	14.64%	19.25%	0.50%
Dec-17	12.70%	11.80%	13.48%	17.51%	14.86%	13.60%	16.42%	18.87%	19.91%	32.92%
Jan-18	14.68%	14.21%	14.77%	18.87%	16.46%	11.92%	16.80%	21.65%	15.18%	3.91%
Feb-18	11.88%	12.96%	12.93%	14.37%	10.44%	9.49%	10.13%	24.75%	13.92%	0.23%
Mar-18	17.85%	15.85%	17.35%	19.38%	17.41%	15.81%	20.15%	0.11%	3.64%	28.51%
Apr-18	10.43%	15.50%	15.23%	13.73%	16.56%	23.48%	18.97%	19.60%	13.75%	55.46%
May-18	17.39%	17.85%	16.19%	21.81%	19.81%	22.29%	13.31%	10.76%	22.36%	0.00%
Jun-18	19.64%	16.93%	20.99%	19.51%	24.47%	16.49%	13.33%	18.31%	18.79%	37.02%
Grand Total	15.05%	14.65%	16.02%	17.53%	16.94%	16.07%	16.33%	16.28%	15.98%	22.62%

FIXED	<250	250-500	500-1mm	1-1.5mm	1.5-2mm	2-2.5mm	2.5-3mm	3-3.5mm	3.5-4mm	4mm+
Nov-17	4.77%	5.13%	32.31%	0.68%	1.07%	0.00%	90.43%	2.10%	0.00%	0.00%
Dec-17	9.40%	23.08%	34.64%	48.62%	43.36%	0.44%	0.00%	0.42%	0.00%	0.00%
Jan-18	23.97%	10.02%	23.65%	0.71%	0.38%	0.00%	0.71%	94.27%	0.00%	0.00%
Feb-18	12.00%	1.10%	23.07%	0.69%	0.47%	0.00%	0.50%	0.00%	5.19%	0.00%
Mar-18	6.02%	20.14%	17.51%	20.47%	0.07%	0.50%	0.00%	0.64%	0.00%	0.00%
Apr-18	4.34%	10.64%	10.40%	1.38%	0.32%	0.14%	0.54%	95.17%	0.00%	0.00%
May-18	20.23%	10.64%	18.17%	18.24%	0.23%	0.00%	0.00%	0.00%	0.00%	0.00%
Jun-18	20.52%	17.94%	8.27%	23.17%	42.79%	0.00%	0.00%	0.71%	0.00%	0.00%
Grand Total	13.16%	12.64%	21.74%	16.13%	13.42%	0.14%	23.94%	51.97%	0.67%	0.00%

SBA 7(a) Pool Buyers —

Confused on how to model pools now? We're not.

The Solomon Hess SBA Loan Fund, a \$558 million loan fund rated by Moody's, is accepting equity from investors that like the SBA 7(a) asset but don't like the high premiums and uncertain cash flows that come with owning pool securities

Solomon Hess SBA Loan Fund Characteristics

- **Investment in a “Mega-pool”:** Composed of roughly 1,000 SBA 7(a) loans located across the country and over 260 different types of businesses, the Solomon Hess SBA Loan Fund provides investors with significant geographical and economic diversification
- **Transparent Income:** The Preferred Return, which is now set at 2.75%, is established at the start of each quarter so an investor can know with a high degree of confidence what the investment will yield for that quarter. Since inception in 2004, the Solomon Hess SBA Loan Fund has always paid the stated Preferred Return
- **Investor Friendly Structure:** Investors' Preferred Return is paid *before, and is net of*, the management fee
- **Rated:** Received the highest possible credit quality rating for a bond fund (AAA-bf) from Moody's Investor Services in January, 2018
- **Liquidity:** Provided quarterly and investors are redeemed at 100% of their capital accounts

Solomon Hess SBA Loan Fund: a better alternative to SBA 7(a) pool investing

**For information contact Michelle Lai, Investor Relations
at mgolai@SolomonHess.com or 703.466.0483**

The Preferred Return is subject to change. Past performance is not indicative of future results and future results are not guaranteed. Prospective investors should consult with their regulator and counsel prior to investing.



The screenshot shows the "ncino Spreads" application interface. At the top, there are navigation tabs for "Income Statement", "Balance Sheet", "Cash Flow Statement", "UCA Cash Flow", and "Ratios". Below these, there are filters for "Port City Coffee", "2014", "Months", "End of Period", "Common Sizing", and "Show Operations". A "Global Analysis" dropdown menu is also visible. The main content is a financial table with columns for "2012", "2013", and "2014" (Projected), each with a "Tax Return" dropdown and a "CS %" column. The table is divided into "Gross Profit" and "Operating expense" sections.

	2012	CS %	2013	CS %	2014	CS %
Gross Profit						
Sales	743,000.00	100.0	943,000.00	100.0	1,124,000.00	100.0
(Returns & allowances)	(12,000.00)	1.6	(15,000.00)	1.6	(27,000.00)	2.4
(Cost of goods sold)	(350,987.00)	47.2	(450,989.00)	47.8	(569,523.00)	50.7
Gross Profit	\$380,013.00	51.1	\$477,011.00	50.6	\$527,477.00	46.9
Operating expense						
Sales, gen & admin expense	270,000.00	36.3	239,839.00	25.4	326,000.00	29.0
Admin. wages & salaries	75,000.00	10.1	85,000.00	9.0	152,000.00	13.5
Officers compensation	34,000.00	4.6	10,000.00	1.1	50,000.00	4.4
Rent	16,500.00	2.2	18,000.00	1.9	0.00	0.0
Bad debt	0.00	0.0	0.00	0.0	0.00	0.0
Insurance	2,800.00	0.4	3,000.00	0.3	6,000.00	0.5
Professional fees	450.00	0.1	700.00	0.1	1,500.00	0.1

Acquire Credit Worthy Customers in a Timely and Efficient Manner

- » Decrease Underwriting Times
- » Consistent Underwriting Practices
- » Timely, Quality Credit Decisions

ncino.com | sales@ncino.com

7(a) Pool Assembler League Tables, All Pools—05/2018

POOL ASSEMBLER	ALL POOLS
SUNTRUST BANK	\$907,662,596
SIGNATURE BANK	\$459,716,171
FTN FINANCIAL CAPITAL MARKETS	\$451,735,307
RAYMOND JAMES BANK, N.A.	\$358,225,486
STIFEL NICOLAUS & COMPANY, INC.	\$307,536,300
KGS-ALPHA CAPITAL MARKETS, L.P.	\$202,364,361
VINING-SPARKS IBG, L.P.	\$173,031,550
CANTOR FITZGERALD & CO.	\$115,159,747
STONEWALL INVESTMENTS INC.,	\$113,328,924
ZB, NATIONAL ASSOCIATION	\$30,916,851
J.V.B. FINANCIAL GROUP. LLC	\$11,094,025
TOTAL	\$3,130,771,318

7(a) Pool Assembler League Tables, 10-13 year maturity pools—05/2018

POOL ASSEMBLER	10-13 YRS.
SUNTRUST BANK	\$193,524,610
FTN FINANCIAL CAPITAL MARKETS	\$176,492,345
KGS-ALPHA CAPITAL MARKETS, L.P.	\$161,001,312
RAYMOND JAMES BANK, N.A.	\$159,906,928
SIGNATURE BANK	\$145,905,640
VINING-SPARKS IBG, L.P.	\$140,101,970
STONEWALL INVESTMENTS INC.,	\$55,055,871
STIFEL NICOLAUS & COMPANY, INC.	\$50,710,226
TOTAL	\$1,082,698,902

7(a) Pool Assembler League Tables, 20+ year maturity pools—05/2018

POOL ASSEMBLER	20+ YRS.
SUNTRUST BANK	\$647,872,083
SIGNATURE BANK	\$264,637,934
STIFEL NICOLAUS & COMPANY, INC.	\$248,907,192
FTN FINANCIAL CAPITAL MARKETS	\$201,595,871
RAYMOND JAMES BANK, N.A.	\$120,896,492
CANTOR FITZGERALD & CO.	\$103,798,431
STONEWALL INVESTMENTS INC.,	\$58,273,054
KGS-ALPHA CAPITAL MARKETS, L.P.	\$41,363,049
VINING-SPARKS IBG, L.P.	\$32,929,579
ZB, NATIONAL ASSOCIATION	\$30,916,851
J.V.B. FINANCIAL GROUP. LLC	\$11,094,025
TOTAL	\$1,762,284,560

7(a) Pool Assembler League Tables, Fixed Rate pools—05/2018

POOL ASSEMBLER	FIXED RATE
J.V.B. FINANCIAL GROUP. LLC	\$11,094,025
FTN FINANCIAL CAPITAL MARKETS	\$7,025,737
TOTAL	\$18,119,762



Does Your Bank Realize Sufficient Earnings from SBA Secondary Market?

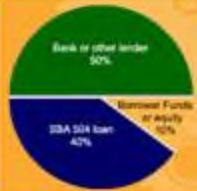
SBFI offers SBA lender training that can improve your SBA secondary market loan sales & strategy.



SBA 7(a) Secondary Mkt. Presented by Bob Judge

More info, click <https://www.sbfi.org/sba-7a-secondary-market/>

- Learn basics of market & how to attract loan bids;
- Best loan structures & who makes market;
- How to settle loan sales & required accounting;
- Calculating gain on sale & valuing portfolios.



504 1st Mtg. Secondary Mkt. Presented by Jordan Blanchard

More info, click <https://www.sbfi.org/sba-504-secondary-market/>

- Learn basics of 504 & how grow loan volume;
- Best loan structures & financing uses;
- Secondary market options to grow loan volume;
- Different sale options and buyer types.



AVANA CAPITAL
PRIVATE COMMERCIAL REAL ESTATE LENDER

Preserving Wealth. Creating Growth.

AVANA Capital is a nationwide commercial real estate lender for businesses in a wide variety of industries. Our philosophy is to lend to small and medium-sized companies with the goal of promoting job growth and retention.

We provide a variety of loan products, such as SBA 504, SBA 7(a), and USDA B&I loans. We also allow for construction and tenant improvements. With AVANA Capital's ability to also offer interim loans as well as partner with other lenders, more loans are originated and funded for companies looking to grow.

Our success stories stretch across the United States. We've funded more than \$500 million in loans, which have resulted in 7,800 new jobs created and maintained in 30 states.

Contact us today to find out how we can help you.

877.850.5130
www.avanacapital.com
avanateam@avanacapital.com

SBIC Debenture Prepayment Speeds

Historical SBIC Defaults and Voluntary Prepayments

MONTH	SBIC DEB CDR	SBIC DEB CRR	SBIC DEB CPR	SBIC DEB AMORT EQUIV CPR
9/1/2002	1.47%	5.94%	7.37%	-3.09%
3/1/2003	0.00%	5.81%	5.81%	-3.70%
9/1/2003	5.13%	6.84%	11.79%	2.60%
3/1/2004	2.79%	8.11%	10.78%	0.24%
9/1/2004	3.74%	10.37%	13.92%	3.82%
3/1/2005	1.63%	12.43%	13.95%	3.83%
9/1/2005	13.67%	9.19%	22.19%	13.21%
3/1/2006	1.76%	7.18%	8.88%	-1.77%
9/1/2006	2.34%	7.75%	10.00%	0.13%
3/1/2007	0.00%	9.39%	9.39%	-0.40%
9/1/2007	2.99%	10.91%	13.73%	3.57%
3/1/2008	2.04%	8.57%	10.53%	0.52%
9/1/2008	0.19%	9.53%	9.71%	-1.12%
3/1/2009	1.79%	5.23%	6.97%	-3.65%
9/1/2009	4.36%	5.64%	9.87%	-1.02%
3/1/2010	0.00%	7.22%	7.22%	-4.32%
9/1/2010	1.50%	8.87%	10.30%	-1.09%
3/1/2011	4.51%	15.21%	19.36%	9.14%
9/1/2011	0.00%	12.66%	12.66%	2.32%
3/1/2012	5.45%	10.39%	15.55%	5.42%
9/1/2012	0.50%	17.80%	18.26%	8.37%
3/1/2013	0.84%	10.28%	11.08%	1.75%
9/1/2013	3.89%	9.07%	12.78%	2.70%
3/1/2014	3.82%	8.10%	11.76%	1.45%
9/1/2014	0.16%	12.17%	12.33%	1.76%
3/1/2015	0.00%	11.09%	11.09%	0.26%
9/1/2015	0.67%	9.17%	9.81%	-0.72%
3/1/2016	0.00%	7.55%	7.55%	-3.93%
9/1/2016	0.00%	9.08%	9.08%	-1.95%
3/1/2017	0.78%	10.45%	11.18%	-0.51%
9/1/2017	0.81%	15.07%	15.81%	4.53%
3/1/2018	0.00%	13.53%	13.53%	1.70%

Repeated from March Report:

For March, we saw overall CPRs stay in the double-digits, recording a

SBIC Defaults and Voluntary Prepayments by Debenture Age

SBIC DEB AGE	SBIC CDR	SBIC CRR	SBIC CPR	AMORT EQUIV CPR
0	0.00%	0.00%	0.00%	0.00%
6	0.34%	1.20%	1.54%	-7.34%
12	0.26%	1.67%	1.93%	-7.48%
18	0.26%	3.63%	3.89%	-5.95%
24	0.85%	4.37%	5.20%	-5.17%
30	1.54%	8.96%	10.43%	-0.09%
36	1.10%	10.47%	11.51%	0.28%
42	1.19%	13.83%	14.94%	3.24%
48	1.83%	15.86%	17.54%	5.14%
54	2.53%	16.45%	18.76%	5.29%
60	2.32%	17.86%	19.97%	5.16%
66	2.87%	25.34%	27.82%	12.83%
72	3.37%	26.94%	29.82%	13.22%
78	3.35%	28.92%	31.74%	12.97%
84	5.26%	27.64%	32.11%	9.93%
90	4.64%	19.12%	23.29%	-7.43%
96	10.52%	31.34%	40.01%	9.10%
102	7.41%	26.94%	33.25%	-14.61%
108	10.13%	44.65%	52.12%	-3.42%
114	18.05%	40.24%	53.99%	-73.75%
120	21.11%	0.00%	21.11%	0.00%

CPR 13.53%, down from 15.81% registered last September.

Once we correct for amortization using our Amortization Equivalent CPR (AECPR) calculation, we see that prepays came in at AECPR 1.70%, down from 4.53% six months ago.

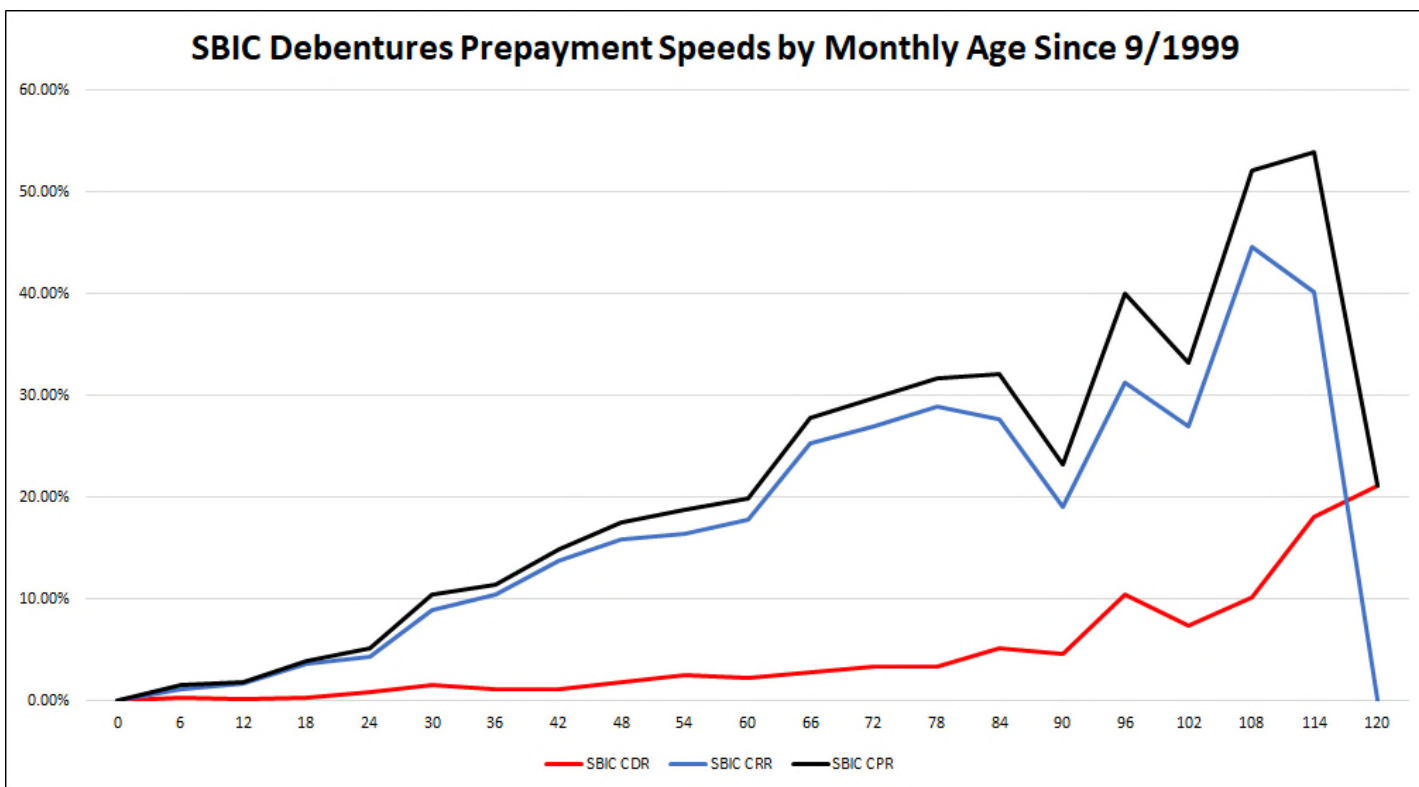
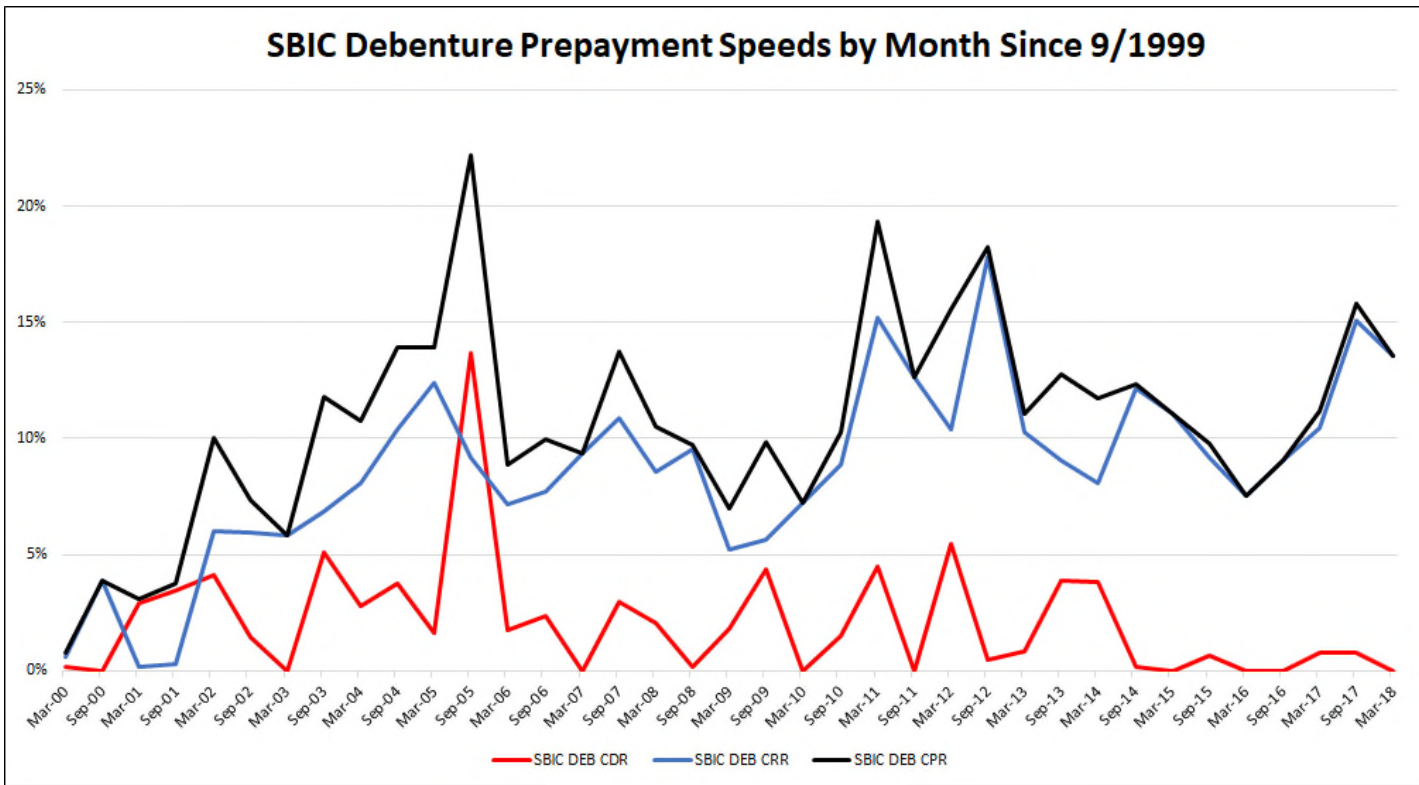
Turning to the components, defaults came in at 0.00% CDR, while the un-amortized CRR came in at 13.53%.

See you in September with a new update.

For further information on the terminology and concepts used in this article, please refer to the "Glossary and Definitions" at the end of the report.

Graphs on next page

SBIC Debenture Prepayment Speeds



FMLP Lifetime Prepayment Speeds

MO / WAM BUCKET	<192 Mos.	192-263 Mos.	264-288 Mos.	289+ Mos.	Total by Month	RESET TYPE	FIXED RATE	FHLB VARIOUS	PRIME RATE	5 YR LIBOR SWAP	3 MO LIBOR	5 YR CMT	Total by Month
Jan-14	0.00%	0.00%	23.24%	0.32%	7.14%	Jan-14	1.04%	0.00%	15.41%	0.00%	0.00%	0.00%	7.14%
Feb-14	0.00%	0.00%	0.00%	0.02%	0.01%	Feb-14	0.00%	0.00%	0.01%	0.02%	-0.09%	0.00%	0.01%
Mar-14	0.00%	0.00%	0.00%	0.81%	0.29%	Mar-14	0.07%	0.00%	0.00%	0.79%	0.00%	0.00%	0.29%
Apr-14	3.62%	0.00%	0.00%	0.01%	0.74%	Apr-14	0.03%	0.00%	-0.01%	0.00%	0.09%	21.56%	0.74%
May-14	0.15%	0.01%	0.03%	0.01%	0.04%	May-14	0.00%	0.00%	0.06%	0.03%	0.00%	0.00%	0.04%
Jun-14	0.00%	15.99%	0.00%	3.11%	4.11%	Jun-14	0.01%	0.00%	6.79%	3.13%	0.00%	0.00%	4.11%
Jul-14	0.00%	43.13%	0.03%	13.78%	13.91%	Jul-14	-0.01%	0.47%	0.05%	34.36%	-0.09%	0.00%	13.91%
Aug-14	0.00%	14.49%	-0.01%	0.00%	2.62%	Aug-14	0.00%	0.00%	0.00%	7.18%	0.00%	0.00%	2.62%
Sep-14	9.58%	27.82%	11.40%	0.22%	10.33%	Sep-14	0.00%	0.00%	18.58%	0.21%	0.00%	49.31%	10.33%
Oct-14	10.74%	40.03%	1.82%	0.00%	10.49%	Oct-14	3.74%	0.00%	21.98%	0.21%	0.00%	0.00%	10.49%
Nov-14	0.00%	25.65%	40.96%	2.52%	18.38%	Nov-14	52.60%	0.00%	23.54%	1.31%	0.00%	0.00%	18.38%
Dec-14	0.00%	0.00%	0.01%	3.08%	1.14%	Dec-14	0.14%	0.00%	0.00%	0.01%	17.58%	0.00%	1.14%
Jan-15	52.31%	59.57%	21.46%	1.73%	30.25%	Jan-15	3.33%	0.00%	43.92%	26.00%	8.45%	0.00%	30.25%
Feb-15	3.97%	28.86%	43.51%	5.55%	21.13%	Feb-15	10.32%	0.00%	33.54%	14.00%	2.68%	0.00%	21.13%
Mar-15	0.00%	7.86%	0.01%	3.73%	2.65%	Mar-15	0.07%	0.00%	2.09%	3.10%	10.30%	0.00%	2.65%
Apr-15	0.01%	5.93%	13.12%	-0.03%	4.58%	Apr-15	-0.01%	0.00%	9.92%	1.19%	0.00%	0.07%	4.58%
May-15	50.36%	0.00%	0.00%	34.13%	25.62%	May-15	0.00%	0.00%	34.21%	22.64%	34.03%	20.06%	25.62%
Jun-15	0.00%	0.00%	29.19%	22.27%	17.26%	Jun-15	29.17%	0.00%	12.42%	22.73%	0.02%	0.00%	17.26%
Jul-15	28.25%	0.00%	25.45%	14.08%	18.24%	Jul-15	8.62%	92.73%	18.86%	10.34%	12.92%	38.15%	18.24%
Aug-15	55.92%	1.07%	22.54%	51.93%	39.39%	Aug-15	35.88%	0.00%	33.74%	45.24%	62.41%	0.00%	39.39%
Sep-15	48.90%	32.20%	17.80%	17.79%	27.00%	Sep-15	0.00%	0.00%	33.65%	25.50%	36.65%	35.26%	27.00%
Oct-15	46.23%	0.00%	37.60%	11.65%	25.01%	Oct-15	29.06%	0.00%	28.59%	24.05%	0.00%	23.56%	25.01%
Nov-15	0.00%	50.42%	8.23%	7.97%	15.81%	Nov-15	0.00%	0.00%	25.26%	14.04%	0.00%	0.00%	15.81%
Dec-15	0.00%	38.73%	9.11%	23.53%	18.63%	Dec-15	0.08%	0.00%	31.95%	13.92%	0.00%	0.00%	18.63%
Jan-16	29.38%	3.68%	25.90%	11.08%	17.92%	Jan-16	9.73%	92.10%	8.35%	19.07%	30.92%	27.01%	17.92%
Feb-16	33.14%	0.00%	12.75%	20.58%	18.08%	Feb-16	0.00%	0.00%	24.69%	3.01%	74.27%	0.00%	18.08%
Mar-16	1.81%	55.70%	24.02%	0.34%	18.60%	Mar-16	44.14%	0.00%	0.00%	28.62%	0.00%	9.05%	18.60%
Apr-16	0.00%	23.98%	13.26%	0.00%	7.65%	Apr-16	0.00%	0.00%	9.73%	0.06%	51.00%	0.00%	7.65%
May-16	49.15%	0.00%	23.05%	21.57%	25.17%	May-16	17.53%	0.00%	39.11%	3.40%	36.12%	63.71%	25.17%
Jun-16	33.50%	46.77%	0.00%	1.98%	15.80%	Jun-16	0.01%	0.00%	34.87%	0.12%	13.23%	0.00%	15.80%
Jul-16	24.65%	21.12%	4.84%	9.69%	12.87%	Jul-16	0.23%	0.00%	0.03%	20.54%	19.39%	68.63%	12.87%
Aug-16	0.00%	35.47%	3.27%	6.29%	9.29%	Aug-16	6.76%	0.00%	14.97%	3.88%	18.80%	0.00%	9.29%
Sep-16	39.47%	0.36%	4.26%	16.16%	15.60%	Sep-16	8.75%	0.00%	18.99%	13.14%	35.67%	0.00%	15.60%
Oct-16	39.47%	80.44%	6.50%	6.79%	29.53%	Oct-16	13.31%	0.00%	51.05%	7.09%	49.98%	0.00%	29.53%
Nov-16	0.00%	0.00%	16.69%	5.80%	7.51%	Nov-16	0.00%	0.00%	17.73%	1.66%	0.00%	0.00%	7.51%
Dec-16	42.29%	28.12%	0.00%	24.53%	22.07%	Dec-16	0.00%	0.00%	27.46%	28.41%	0.00%	0.00%	22.07%
Jan-17	19.49%	54.03%	5.15%	30.13%	25.61%	Jan-17	19.61%	0.00%	25.05%	21.91%	72.00%	0.00%	25.61%
Feb-17	3.55%	70.16%	23.13%	41.34%	36.10%	Feb-17	23.56%	0.00%	42.95%	40.70%	0.00%	0.00%	36.10%
Mar-17	5.00%	0.00%	7.31%	13.26%	8.61%	Mar-17	0.00%	0.00%	16.90%	5.84%	0.00%	0.00%	8.61%
Apr-17	25.30%	72.04%	8.26%	7.25%	21.90%	Apr-17	2.92%	0.00%	38.32%	13.87%	0.00%	33.73%	21.90%
May-17	0.00%	0.00%	0.00%	15.94%	6.94%	May-17	14.23%	0.00%	0.00%	11.56%	0.00%	0.00%	6.94%
Jun-17	76.55%	0.00%	4.11%	12.77%	25.74%	Jun-17	0.00%	0.00%	56.10%	4.28%	0.00%	0.00%	25.74%
Jul-17	9.87%	47.97%	35.43%	14.81%	25.47%	Jul-17	9.65%	0.00%	29.35%	26.89%	49.87%	0.00%	25.47%
Aug-17	4.71%	0.00%	2.95%	18.95%	10.00%	Aug-17	26.32%	0.00%	2.18%	10.01%	0.00%	20.06%	10.00%
Sep-17	0.00%	0.00%	0.01%	18.24%	8.06%	Sep-17	0.00%	0.00%	0.00%	18.72%	0.00%	0.00%	8.06%
Oct-17	23.67%	61.32%	23.85%	9.08%	23.60%	Oct-17	0.00%	0.00%	34.54%	27.20%	0.00%	0.00%	23.60%
Nov-17	0.00%	0.03%	31.31%	10.77%	15.49%	Nov-17	5.72%	0.00%	30.61%	9.21%	0.00%	0.00%	15.49%
Dec-17	0.02%	0.00%	42.10%	16.59%	21.99%	Dec-17	9.58%	0.00%	25.75%	26.83%	16.28%	0.00%	21.99%
Jan-18	66.29%	0.00%	47.65%	0.03%	30.64%	Jan-18	31.52%	0.00%	0.00%	50.52%	0.05%	49.09%	30.64%
Feb-18	0.00%	0.00%	25.23%	52.60%	33.79%	Feb-18	18.55%	0.00%	0.00%	57.21%	62.09%	0.00%	33.79%
Mar-18	64.83%	15.54%	41.02%	11.84%	32.40%	Mar-18	7.13%	97.73%	49.52%	17.60%	0.00%	0.00%	32.40%
Apr-18	0.00%	0.00%	0.01%	45.37%	22.90%	Apr-18	1.48%	0.00%	42.88%	16.71%	0.06%	0.00%	22.90%
May-18	56.64%	97.30%	5.23%	10.78%	43.21%	May-18	0.00%	0.00%	79.33%	15.53%	0.00%	0.00%	43.21%
Jun-18	0.00%	0.00%	8.49%	0.23%	2.91%	Jun-18	0.00%	0.00%	9.24%	0.04%	0.02%	0.00%	2.91%
Total	13.27%	15.71%	9.65%	9.21%	11.08%	Total	6.35%	8.39%	13.17%	10.38%	10.74%	11.70%	11.08%

FMLP Lifetime Prepayment Speed Commentary

In June, the FMLP saw prepayments fall by 93%, coming in at CPR 2.91%, the lowest level since March of 2015. Regarding the history of the FMLP, the overall CPR fell to CPR 11.08% from CPR 11.13%.

As for fixed rate pools, they recorded another CPR of 0.00%, which decreased the lifetime speed to CPR 6.35% from CPR 6.40%. Fixed rate pools continue to be the lowest prepayment reset category in the FMLP.

For further information on the terminology and concepts used in this article, please refer to the “Glossary and Definitions” at the end of the report.

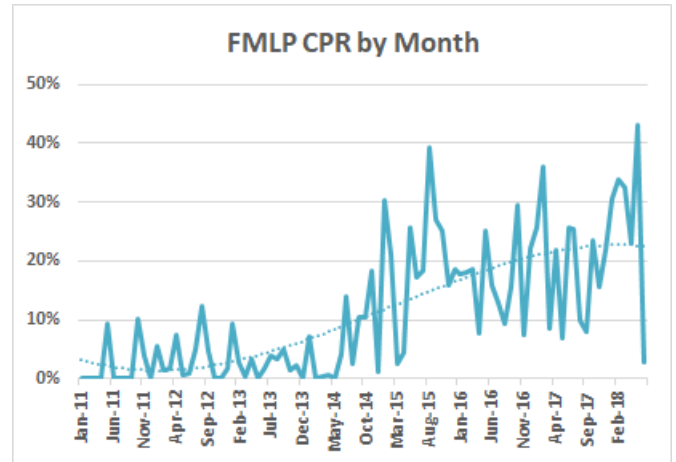


Chart on previous page

Small Business Indexes Commentary

Please note: We have added our “Hedge” indexes to the CPR Report, which are IO Strip indexes without sub-indexes for pricing and return of capital. They take all interest received and include it as income without dividing it into income and return of capital, which is how the tax accounting is done for most investors. Since pricing and the accounting method can vary across the industry, the hedge index only measures that which comes purely from the data, such as interest and prepayments. We leave it to the industry to utilize their own pricing and tax accounting methodologies.

State of the Secondary Market

Beginning with the Rich/Cheap analysis on the following page, we see that by the end of June, significant drops in secondary market pricing pushed short maturities to the bottom of the Fair Value Band (FVB) while long maturities are now considered “Cheap”.

SBI Index Results

For June, we witnessed decreases in 7a pools, 7a IOs, SBICs and the Composite with SBAPs being the only sector that increased.

SBA 7a pools returned -0.62% for actual and -0.58% for equal weighting this month versus +0.07% / +0.07% last month as loan prices fell significantly in June.

For IO Strips, we witnessed returns of -11.34% / -11.25%, down from returns of -2.31% / -2.03% last month. Beyond high prepayment speeds, significant decreases in the Secondary Market took their toll on the IO indexes. Its always important to note that, as the most sensitive asset class to changes in 7a market conditions, movements in price and prepayment speeds can have an outsized impact on these indexes.

Turning to our SBAP and SBIC indexes, we saw the 504 debenture indexes come in at +0.05% / +0.15% and SBIC debenture indexes were -0.13% / -0.11%.

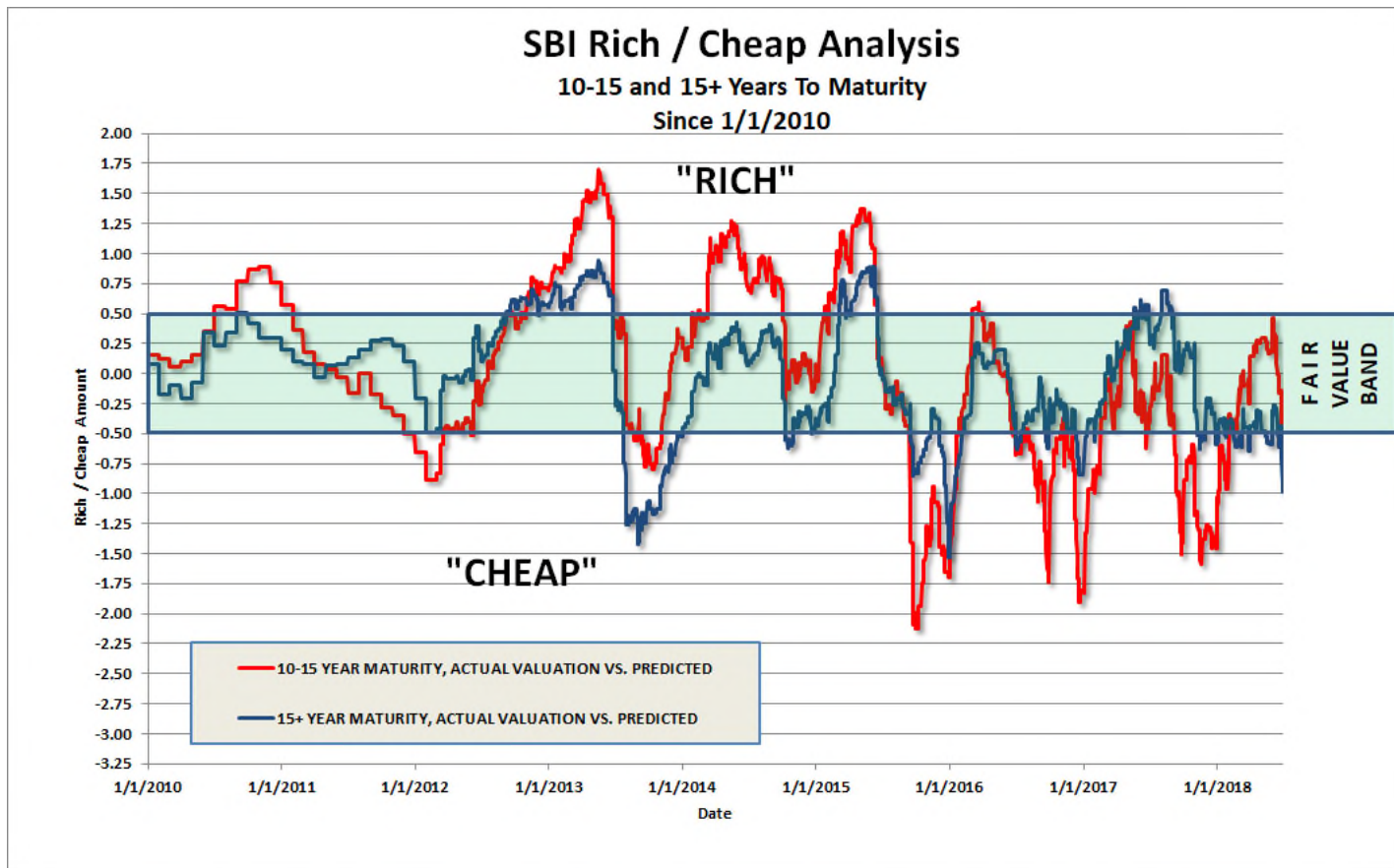
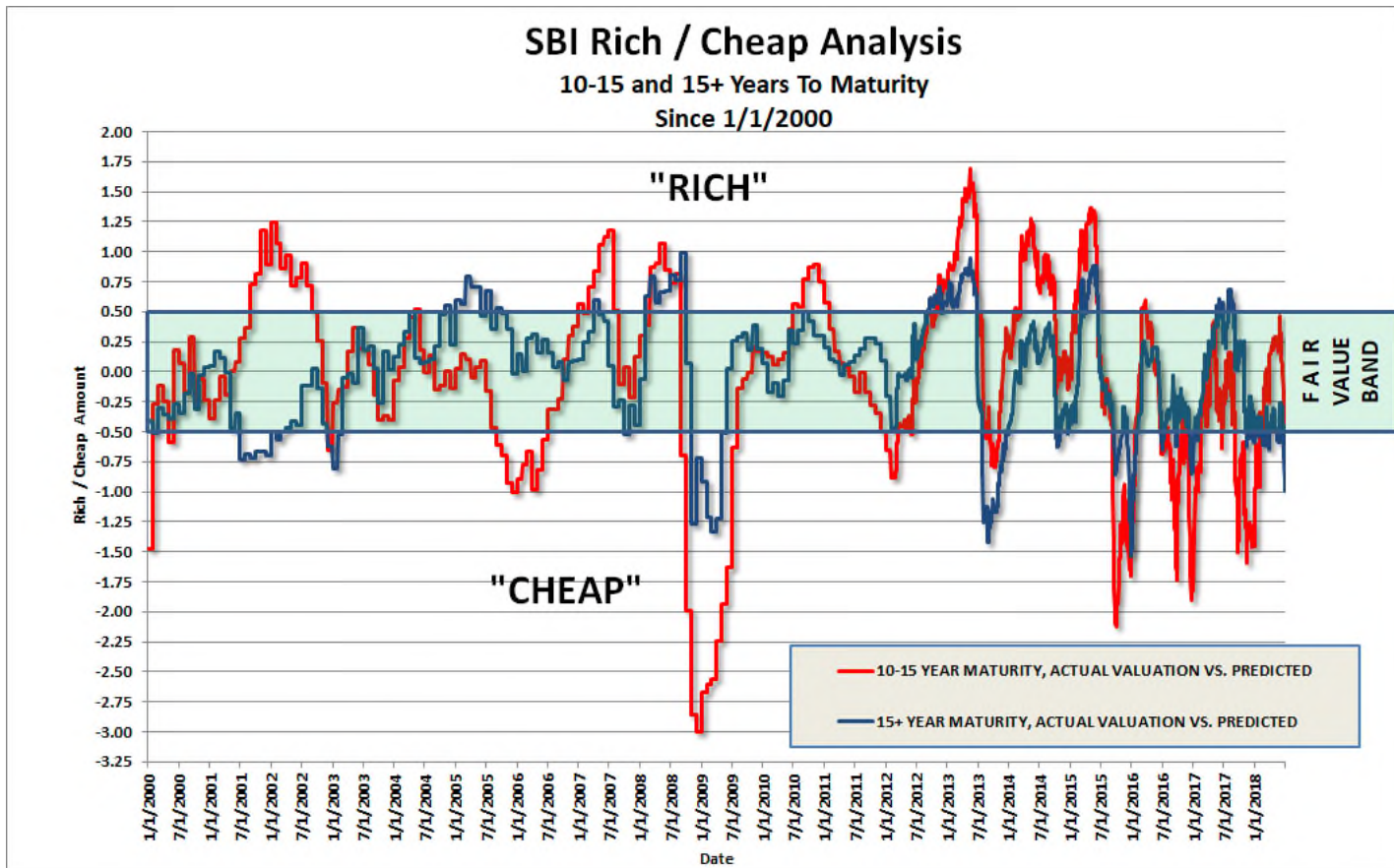
Overall, our Composite Index came in at -0.62% / -0.56%.

If you wish to further delve into the SBI Indexes, please visit our website at www.sbindexes.com. Registration is currently free and it contains a host of information relating to these indexes, as well as indexing in general.

For further information on the SBI Indexes, please refer to the “Glossary and Definitions” at the end of the report.

Charts begin on next page

Rich / Cheap Graphs



Small Business Indexes Results

END DATE: 06/30/2018	SBI POOL INDEX TOTAL RETURN							
INDEX TYPE	1 MONTH	3 MONTH	6 MONTH	1 YEAR	3 YEAR	5 YEAR	10 YEAR	INCEPTION
POOL, ALL EQUAL INDEX	(0.58%)	(0.26%)	0.20%	0.14%	2.82%	5.32%	44.15%	128.61%
POOL, ALL ACTUAL INDEX	(0.62%)	(0.30%)	0.17%	0.15%	2.85%	5.41%	31.08%	102.34%
POOL, LONG EQUAL INDEX	(0.50%)	(0.20%)	0.16%	0.19%	2.85%	5.46%	52.55%	145.05%
POOL, LONG ACTUAL INDEX	(0.48%)	(0.19%)	0.15%	0.25%	2.88%	5.52%	35.50%	111.28%
POOL, SHORT EQUAL INDEX	(0.84%)	(0.45%)	0.34%	(0.02%)	2.71%	4.91%	26.08%	91.02%
POOL, SHORT ACTUAL INDEX	(0.98%)	(0.56%)	0.24%	(0.12%)	2.80%	5.11%	21.76%	82.15%
POOL, ALL EQUAL INCOME INDEX	0.31%	0.94%	1.82%	3.55%	9.33%	14.94%	58.42%	174.48%
POOL, ALL ACTUAL INCOME INDEX	0.31%	0.95%	1.85%	3.60%	9.49%	15.24%	44.34%	141.72%
POOL, LONG EQUAL INCOME INDEX	0.29%	0.88%	1.70%	3.29%	8.48%	13.50%	62.85%	184.32%
POOL, LONG ACTUAL INCOME INDEX	0.28%	0.87%	1.68%	3.26%	8.46%	13.62%	44.71%	143.28%
POOL, SHORT EQUAL INCOME INDEX	0.37%	1.12%	2.20%	4.35%	12.11%	19.65%	50.29%	156.82%
POOL, SHORT ACTUAL INCOME INDEX	0.38%	1.17%	2.29%	4.51%	12.49%	20.27%	45.58%	144.40%
POOL, ALL EQUAL PRICE INDEX	(0.79%)	(0.89%)	(1.00%)	(2.18%)	(2.95%)	(3.41%)	(1.51%)	(2.89%)
POOL, ALL ACTUAL PRICE INDEX	(0.83%)	(0.93%)	(1.05%)	(2.20%)	(2.98%)	(3.45%)	(1.59%)	(2.92%)
POOL, LONG EQUAL PRICE INDEX	(0.69%)	(0.79%)	(0.96%)	(1.99%)	(2.54%)	(2.71%)	(0.26%)	(1.60%)
POOL, LONG ACTUAL PRICE INDEX	(0.67%)	(0.78%)	(0.97%)	(1.91%)	(2.47%)	(2.69%)	(0.30%)	(1.56%)
POOL, SHORT EQUAL PRICE INDEX	(1.07%)	(1.19%)	(1.09%)	(2.74%)	(4.25%)	(5.56%)	(5.01%)	(6.96%)
POOL, SHORT ACTUAL PRICE INDEX	(1.23%)	(1.32%)	(1.24%)	(2.95%)	(4.42%)	(5.67%)	(5.05%)	(7.07%)
POOL, ALL EQUAL PREPAY INDEX	(0.08%)	(0.23%)	(0.46%)	(0.84%)	(2.12%)	(3.44%)	(4.81%)	(10.55%)
POOL, ALL ACTUAL PREPAY INDEX	(0.08%)	(0.24%)	(0.46%)	(0.85%)	(2.17%)	(3.55%)	(4.90%)	(10.13%)
POOL, LONG EQUAL PREPAY INDEX	(0.08%)	(0.23%)	(0.47%)	(0.83%)	(2.06%)	(3.33%)	(4.32%)	(9.98%)
POOL, LONG ACTUAL PREPAY INDEX	(0.08%)	(0.23%)	(0.46%)	(0.83%)	(2.12%)	(3.44%)	(4.36%)	(9.46%)
POOL, SHORT EQUAL PREPAY INDEX	(0.09%)	(0.23%)	(0.44%)	(0.87%)	(2.30%)	(3.75%)	(6.06%)	(12.22%)
POOL, SHORT ACTUAL PREPAY INDEX	(0.09%)	(0.24%)	(0.46%)	(0.90%)	(2.34%)	(3.89%)	(6.22%)	(11.99%)
POOL, ALL EQUAL DEFAULT INDEX	(0.01%)	(0.04%)	(0.07%)	(0.11%)	(0.28%)	(0.54%)	(1.23%)	(2.31%)
POOL, ALL ACTUAL DEFAULT INDEX	(0.01%)	(0.04%)	(0.07%)	(0.12%)	(0.28%)	(0.56%)	(1.24%)	(2.23%)
POOL, LONG EQUAL DEFAULT INDEX	(0.01%)	(0.04%)	(0.07%)	(0.11%)	(0.27%)	(0.52%)	(1.00%)	(2.05%)
POOL, LONG ACTUAL DEFAULT INDEX	(0.01%)	(0.04%)	(0.07%)	(0.11%)	(0.28%)	(0.54%)	(0.98%)	(1.93%)
POOL, SHORT EQUAL DEFAULT INDEX	(0.01%)	(0.04%)	(0.06%)	(0.12%)	(0.30%)	(0.59%)	(1.81%)	(3.01%)
POOL, SHORT ACTUAL DEFAULT INDEX	(0.01%)	(0.04%)	(0.07%)	(0.12%)	(0.31%)	(0.62%)	(1.84%)	(2.97%)
POOL, ALL EQUAL VOL PREPAY INDEX	(0.07%)	(0.19%)	(0.40%)	(0.72%)	(1.85%)	(2.91%)	(3.62%)	(8.43%)
POOL, ALL ACTUAL VOL PREPAY INDEX	(0.07%)	(0.20%)	(0.40%)	(0.74%)	(1.89%)	(3.01%)	(3.71%)	(8.08%)
POOL, LONG EQUAL VOL PREPAY INDEX	(0.06%)	(0.20%)	(0.40%)	(0.71%)	(1.80%)	(2.83%)	(3.35%)	(8.09%)
POOL, LONG ACTUAL VOL PREPAY INDEX	(0.06%)	(0.20%)	(0.39%)	(0.72%)	(1.84%)	(2.92%)	(3.41%)	(7.68%)
POOL, SHORT EQUAL VOL PREPAY INDEX	(0.07%)	(0.19%)	(0.38%)	(0.75%)	(2.01%)	(3.18%)	(4.33%)	(9.49%)
POOL, SHORT ACTUAL VOL PREPAY INDEX	(0.07%)	(0.20%)	(0.40%)	(0.78%)	(2.04%)	(3.29%)	(4.46%)	(9.30%)
POOL, ALL EQUAL SCHED PRIN INDEX	(0.02%)	(0.07%)	(0.14%)	(0.30%)	(1.00%)	(1.76%)	(2.95%)	(4.11%)
POOL, ALL ACTUAL SCHED PRIN INDEX	(0.02%)	(0.07%)	(0.15%)	(0.32%)	(1.02%)	(1.77%)	(2.96%)	(4.05%)
POOL, LONG EQUAL SCHED PRIN INDEX	(0.01%)	(0.04%)	(0.09%)	(0.20%)	(0.67%)	(1.19%)	(1.85%)	(2.69%)
POOL, LONG ACTUAL SCHED PRIN INDEX	(0.01%)	(0.04%)	(0.09%)	(0.19%)	(0.65%)	(1.16%)	(1.80%)	(2.55%)
POOL, SHORT EQUAL SCHED PRIN INDEX	(0.05%)	(0.14%)	(0.29%)	(0.61%)	(2.06%)	(3.53%)	(5.98%)	(8.92%)
POOL, SHORT ACTUAL SCHED PRIN INDEX	(0.05%)	(0.15%)	(0.30%)	(0.64%)	(2.09%)	(3.60%)	(6.06%)	(8.86%)
POOL, ALL EQUAL TOTAL PRIN INDEX	(0.10%)	(0.30%)	(0.60%)	(1.14%)	(3.10%)	(5.14%)	(7.62%)	(14.23%)
POOL, ALL ACTUAL TOTAL PRIN INDEX	(0.10%)	(0.31%)	(0.61%)	(1.16%)	(3.17%)	(5.26%)	(7.72%)	(13.77%)
POOL, LONG EQUAL TOTAL PRIN INDEX	(0.09%)	(0.28%)	(0.56%)	(1.03%)	(2.72%)	(4.49%)	(6.08%)	(12.40%)
POOL, LONG ACTUAL TOTAL PRIN INDEX	(0.09%)	(0.28%)	(0.55%)	(1.02%)	(2.75%)	(4.56%)	(6.08%)	(11.78%)
POOL, SHORT EQUAL TOTAL PRIN INDEX	(0.13%)	(0.37%)	(0.73%)	(1.48%)	(4.31%)	(7.16%)	(11.68%)	(20.05%)
POOL, SHORT ACTUAL TOTAL PRIN INDEX	(0.13%)	(0.39%)	(0.76%)	(1.53%)	(4.38%)	(7.35%)	(11.90%)	(19.80%)

Small Business Indexes Results

END DATE: 06/30/2018	SBI STRIP INDEX TOTAL RETURN							
INDEX TYPE	1 MONTH	3 MONTH	6 MONTH	1 YEAR	3 YEAR	5 YEAR	10 YEAR	INCEPTION
STRIP, ALL EQUAL INDEX	(11.25%)	(13.12%)	(15.15%)	(25.87%)	(34.97%)	(41.48%)	136.48%	203.31%
STRIP, ALL ACTUAL INDEX	(11.34%)	(13.47%)	(15.69%)	(27.10%)	(33.64%)	(41.69%)	89.85%	157.89%
STRIP, LONG EQUAL INDEX	(9.50%)	(11.94%)	(14.55%)	(24.17%)	(29.38%)	(27.87%)	345.53%	472.08%
STRIP, LONG ACTUAL INDEX	(9.20%)	(11.78%)	(14.25%)	(23.74%)	(29.43%)	(28.73%)	221.77%	317.39%
STRIP, SHORT EQUAL INDEX	(15.53%)	(16.09%)	(16.63%)	(30.20%)	(47.90%)	(64.54%)	(19.86%)	(21.47%)
STRIP, SHORT ACTUAL INDEX	(15.20%)	(16.54%)	(18.32%)	(33.22%)	(42.87%)	(63.30%)	(19.62%)	(1.82%)
STRIP, ALL EQUAL INCOME INDEX	0.77%	2.48%	5.15%	10.92%	38.01%	71.23%	466.27%	3,375.11%
STRIP, ALL ACTUAL INCOME INDEX	0.74%	2.44%	5.08%	10.64%	37.26%	69.77%	356.86%	2,513.50%
STRIP, LONG EQUAL INCOME INDEX	0.80%	2.59%	5.38%	11.51%	39.47%	76.91%	637.49%	4,746.88%
STRIP, LONG ACTUAL INCOME INDEX	0.79%	2.54%	5.23%	11.12%	37.88%	74.46%	442.87%	3,140.54%
STRIP, SHORT EQUAL INCOME INDEX	0.67%	2.20%	4.55%	9.38%	34.23%	58.84%	283.40%	1,805.21%
STRIP, SHORT ACTUAL INCOME INDEX	0.67%	2.26%	4.79%	9.72%	36.24%	60.46%	257.45%	1,675.17%
STRIP, ALL EQUAL PRICE INDEX	(10.37%)	(10.82%)	(10.73%)	(20.10%)	(25.74%)	(29.18%)	61.01%	72.31%
STRIP, ALL ACTUAL PRICE INDEX	(10.48%)	(11.22%)	(11.56%)	(21.48%)	(24.48%)	(29.89%)	57.79%	82.11%
STRIP, LONG EQUAL PRICE INDEX	(8.76%)	(9.88%)	(10.67%)	(19.70%)	(23.53%)	(22.44%)	80.04%	84.26%
STRIP, LONG ACTUAL PRICE INDEX	(8.42%)	(9.67%)	(10.44%)	(19.03%)	(22.84%)	(22.81%)	73.10%	90.35%
STRIP, SHORT EQUAL PRICE INDEX	(14.34%)	(13.20%)	(10.83%)	(21.16%)	(31.35%)	(42.99%)	27.62%	21.42%
STRIP, SHORT ACTUAL PRICE INDEX	(14.21%)	(14.06%)	(13.61%)	(26.06%)	(28.92%)	(44.44%)	30.63%	42.88%
STRIP, ALL EQUAL PREPAY INDEX	(1.34%)	(3.83%)	(7.47%)	(12.35%)	(26.56%)	(37.89%)	(55.92%)	(88.81%)
STRIP, ALL ACTUAL PREPAY INDEX	(1.30%)	(3.73%)	(7.11%)	(12.03%)	(26.21%)	(37.55%)	(55.74%)	(88.22%)
STRIP, LONG EQUAL PREPAY INDEX	(1.36%)	(4.01%)	(7.80%)	(12.60%)	(26.88%)	(37.90%)	(53.29%)	(89.09%)
STRIP, LONG ACTUAL PREPAY INDEX	(1.39%)	(4.06%)	(7.68%)	(12.69%)	(27.16%)	(38.07%)	(53.17%)	(88.77%)
STRIP, SHORT EQUAL PREPAY INDEX	(1.31%)	(3.36%)	(6.61%)	(11.70%)	(25.71%)	(37.67%)	(59.33%)	(85.99%)
STRIP, SHORT ACTUAL PREPAY INDEX	(1.15%)	(3.12%)	(6.06%)	(10.77%)	(24.16%)	(36.38%)	(58.68%)	(84.91%)
STRIP, ALL EQUAL DEFAULT INDEX	(0.22%)	(0.62%)	(1.09%)	(1.78%)	(3.93%)	(7.00%)	(22.21%)	(38.93%)
STRIP, ALL ACTUAL DEFAULT INDEX	(0.21%)	(0.60%)	(1.04%)	(1.73%)	(3.87%)	(6.91%)	(22.27%)	(38.63%)
STRIP, LONG EQUAL DEFAULT INDEX	(0.22%)	(0.65%)	(1.14%)	(1.82%)	(3.98%)	(6.96%)	(19.46%)	(37.56%)
STRIP, LONG ACTUAL DEFAULT INDEX	(0.23%)	(0.66%)	(1.12%)	(1.84%)	(4.03%)	(6.97%)	(19.32%)	(37.30%)
STRIP, SHORT EQUAL DEFAULT INDEX	(0.22%)	(0.54%)	(0.96%)	(1.68%)	(3.79%)	(7.04%)	(25.87%)	(38.87%)
STRIP, SHORT ACTUAL DEFAULT INDEX	(0.19%)	(0.50%)	(0.88%)	(1.53%)	(3.53%)	(6.77%)	(25.85%)	(38.32%)
STRIP, ALL EQUAL VOL PREPAY INDEX	(1.12%)	(3.22%)	(6.44%)	(10.75%)	(23.53%)	(33.18%)	(43.28%)	(81.61%)
STRIP, ALL ACTUAL VOL PREPAY INDEX	(1.09%)	(3.14%)	(6.13%)	(10.46%)	(23.22%)	(32.88%)	(42.99%)	(80.74%)
STRIP, LONG EQUAL VOL PREPAY INDEX	(1.13%)	(3.38%)	(6.73%)	(10.96%)	(23.82%)	(33.22%)	(41.95%)	(82.45%)
STRIP, LONG ACTUAL VOL PREPAY INDEX	(1.16%)	(3.42%)	(6.61%)	(11.04%)	(24.07%)	(33.40%)	(41.90%)	(82.02%)
STRIP, SHORT EQUAL VOL PREPAY INDEX	(1.10%)	(2.83%)	(5.69%)	(10.18%)	(22.76%)	(32.91%)	(45.08%)	(77.01%)
STRIP, SHORT ACTUAL VOL PREPAY INDEX	(0.96%)	(2.63%)	(5.21%)	(9.37%)	(21.37%)	(31.72%)	(44.21%)	(75.46%)
STRIP, ALL EQUAL SCHED PRIN INDEX	(0.38%)	(1.13%)	(2.27%)	(4.52%)	(13.44%)	(21.95%)	(41.01%)	(54.22%)
STRIP, ALL ACTUAL SCHED PRIN INDEX	(0.38%)	(1.14%)	(2.28%)	(4.53%)	(13.09%)	(21.20%)	(40.33%)	(53.54%)
STRIP, LONG EQUAL SCHED PRIN INDEX	(0.25%)	(0.75%)	(1.52%)	(3.05%)	(9.32%)	(15.13%)	(28.12%)	(40.62%)
STRIP, LONG ACTUAL SCHED PRIN INDEX	(0.23%)	(0.71%)	(1.43%)	(2.88%)	(8.83%)	(14.33%)	(26.82%)	(39.09%)
STRIP, SHORT EQUAL SCHED PRIN INDEX	(0.70%)	(2.09%)	(4.17%)	(8.28%)	(23.58%)	(36.49%)	(59.39%)	(75.35%)
STRIP, SHORT ACTUAL SCHED PRIN INDEX	(0.65%)	(1.94%)	(3.86%)	(7.63%)	(21.96%)	(34.61%)	(57.99%)	(73.98%)
STRIP, ALL EQUAL TOTAL PRIN INDEX	(1.72%)	(4.94%)	(9.59%)	(16.36%)	(36.51%)	(51.62%)	(74.09%)	(94.91%)
STRIP, ALL ACTUAL TOTAL PRIN INDEX	(1.68%)	(4.85%)	(9.26%)	(16.06%)	(35.95%)	(50.88%)	(73.68%)	(94.57%)
STRIP, LONG EQUAL TOTAL PRIN INDEX	(1.60%)	(4.75%)	(9.22%)	(15.30%)	(33.76%)	(47.37%)	(66.50%)	(93.55%)
STRIP, LONG ACTUAL TOTAL PRIN INDEX	(1.62%)	(4.75%)	(9.01%)	(15.23%)	(33.64%)	(47.01%)	(65.80%)	(93.19%)
STRIP, SHORT EQUAL TOTAL PRIN INDEX	(2.01%)	(5.41%)	(10.55%)	(19.08%)	(43.36%)	(60.56%)	(83.60%)	(96.59%)
STRIP, SHORT ACTUAL TOTAL PRIN INDEX	(1.79%)	(5.02%)	(9.72%)	(17.64%)	(40.93%)	(58.53%)	(82.75%)	(96.12%)

Small Business Indexes Results

END DATE: 06/30/2018	SBI HEDGE STRIP INDEX TOTAL RETURN							
INDEX TYPE	1 MONTH	3 MONTH	6 MONTH	1 YEAR	3 YEAR	5 YEAR	10 YEAR	INCEPTION
HEDGE, ALL EQUAL INDEX	0.54%	1.86%	3.53%	9.54%	41.69%	84.91%	928.47%	2,807.54%
HEDGE, ALL ACTUAL INDEX	0.61%	2.01%	3.91%	10.06%	43.21%	88.05%	565.97%	1,645.30%
HEDGE, LONG EQUAL INDEX	0.50%	1.62%	3.01%	8.75%	39.57%	81.38%	1,122.90%	3,308.64%
HEDGE, LONG ACTUAL INDEX	0.52%	1.68%	3.20%	8.84%	39.79%	82.72%	631.29%	1,765.64%
HEDGE, SHORT EQUAL INDEX	0.71%	2.86%	5.73%	12.91%	51.20%	101.13%	507.34%	2,229.88%
HEDGE, SHORT ACTUAL INDEX	0.90%	3.16%	6.40%	14.42%	57.05%	110.68%	419.58%	1,871.57%
HEDGE, ALL EQUAL INCOME INDEX	2.15%	6.65%	13.66%	29.45%	116.82%	263.31%	3,503.31%	51,300.19%
HEDGE, ALL ACTUAL INCOME INDEX	2.16%	6.71%	13.79%	29.73%	117.66%	264.24%	2,200.48%	29,299.74%
HEDGE, LONG EQUAL INCOME INDEX	2.01%	6.24%	12.78%	27.46%	107.23%	236.70%	3,582.01%	51,891.10%
HEDGE, LONG ACTUAL INCOME INDEX	2.01%	6.24%	12.78%	27.46%	107.23%	236.70%	2,077.05%	27,265.42%
HEDGE, SHORT EQUAL INCOME INDEX	2.69%	8.37%	17.34%	38.05%	163.35%	401.93%	3,588.97%	67,944.90%
HEDGE, SHORT ACTUAL INCOME INDEX	2.69%	8.37%	17.34%	38.05%	163.35%	401.93%	2,917.63%	51,499.49%
HEDGE, ALL EQUAL PREPAY INDEX	(1.21%)	(3.42%)	(6.83%)	(11.43%)	(24.59%)	(35.08%)	(53.20%)	(88.12%)
HEDGE, ALL ACTUAL PREPAY INDEX	(1.18%)	(3.37%)	(6.68%)	(11.37%)	(24.64%)	(35.07%)	(53.35%)	(87.79%)
HEDGE, LONG EQUAL PREPAY INDEX	(1.20%)	(3.51%)	(7.05%)	(11.58%)	(24.56%)	(34.79%)	(51.50%)	(88.15%)
HEDGE, LONG ACTUAL PREPAY INDEX	(1.20%)	(3.51%)	(6.98%)	(11.70%)	(24.96%)	(35.08%)	(51.80%)	(87.93%)
HEDGE, SHORT EQUAL PREPAY INDEX	(1.23%)	(3.05%)	(5.96%)	(10.84%)	(24.74%)	(36.26%)	(58.49%)	(85.51%)
HEDGE, SHORT ACTUAL PREPAY INDEX	(1.09%)	(2.91%)	(5.66%)	(10.26%)	(23.52%)	(35.30%)	(58.05%)	(84.60%)
HEDGE, ALL EQUAL DEFAULT INDEX	(0.20%)	(0.55%)	(0.99%)	(1.64%)	(3.60%)	(6.36%)	(21.10%)	(38.13%)
HEDGE, ALL ACTUAL DEFAULT INDEX	(0.19%)	(0.54%)	(0.97%)	(1.63%)	(3.61%)	(6.34%)	(21.33%)	(38.12%)
HEDGE, LONG EQUAL DEFAULT INDEX	(0.20%)	(0.57%)	(1.02%)	(1.66%)	(3.60%)	(6.28%)	(19.60%)	(37.33%)
HEDGE, LONG ACTUAL DEFAULT INDEX	(0.20%)	(0.57%)	(1.01%)	(1.68%)	(3.66%)	(6.31%)	(19.82%)	(37.35%)
HEDGE, SHORT EQUAL DEFAULT INDEX	(0.20%)	(0.49%)	(0.87%)	(1.54%)	(3.62%)	(6.71%)	(25.78%)	(38.72%)
HEDGE, SHORT ACTUAL DEFAULT INDEX	(0.18%)	(0.47%)	(0.82%)	(1.45%)	(3.41%)	(6.52%)	(28.86%)	(38.36%)
HEDGE, ALL EQUAL VOL PREPAY INDEX	(1.01%)	(2.88%)	(5.89%)	(9.94%)	(21.75%)	(30.64%)	(40.63%)	(80.72%)
HEDGE, ALL ACTUAL VOL PREPAY INDEX	(0.98%)	(2.84%)	(5.76%)	(9.89%)	(21.80%)	(30.65%)	(40.65%)	(80.20%)
HEDGE, LONG EQUAL VOL PREPAY INDEX	(1.01%)	(2.96%)	(6.08%)	(10.07%)	(21.72%)	(30.39%)	(39.63%)	(81.02%)
HEDGE, LONG ACTUAL VOL PREPAY INDEX	(1.00%)	(2.95%)	(6.02%)	(10.18%)	(22.09%)	(30.67%)	(39.84%)	(80.67%)
HEDGE, SHORT EQUAL VOL PREPAY INDEX	(1.03%)	(2.57%)	(5.13%)	(9.43%)	(21.90%)	(31.65%)	(44.01%)	(76.28%)
HEDGE, SHORT ACTUAL VOL PREPAY INDEX	(0.91%)	(2.45%)	(4.87%)	(8.93%)	(20.79%)	(30.76%)	(43.35%)	(74.95%)
HEDGE, ALL EQUAL SCHED PRIN INDEX	(0.36%)	(1.10%)	(2.20%)	(4.41%)	(13.25%)	(21.47%)	(38.84%)	(52.12%)
HEDGE, ALL ACTUAL SCHED PRIN INDEX	(0.35%)	(1.06%)	(2.12%)	(4.24%)	(12.60%)	(20.35%)	(37.77%)	(51.10%)
HEDGE, LONG EQUAL SCHED PRIN INDEX	(0.28%)	(0.85%)	(1.72%)	(3.48%)	(10.65%)	(17.28%)	(31.38%)	(44.43%)
HEDGE, LONG ACTUAL SCHED PRIN INDEX	(0.26%)	(0.80%)	(1.62%)	(3.26%)	(10.03%)	(16.31%)	(30.17%)	(43.24%)
HEDGE, SHORT EQUAL SCHED PRIN INDEX	(0.69%)	(2.08%)	(4.14%)	(8.20%)	(23.55%)	(36.91%)	(60.08%)	(76.09%)
HEDGE, SHORT ACTUAL SCHED PRIN INDEX	(0.65%)	(1.94%)	(3.84%)	(7.58%)	(21.89%)	(34.92%)	(58.70%)	(74.90%)
HEDGE, ALL EQUAL TOTAL PRIN INDEX	(1.57%)	(4.49%)	(8.91%)	(15.38%)	(34.65%)	(49.10%)	(71.47%)	(94.35%)
HEDGE, ALL ACTUAL TOTAL PRIN INDEX	(1.52%)	(4.41%)	(8.69%)	(15.17%)	(34.20%)	(48.37%)	(71.06%)	(94.07%)
HEDGE, LONG EQUAL TOTAL PRIN INDEX	(1.48%)	(4.35%)	(8.67%)	(14.68%)	(32.65%)	(46.13%)	(66.80%)	(93.45%)
HEDGE, LONG ACTUAL TOTAL PRIN INDEX	(1.46%)	(4.29%)	(8.50%)	(14.61%)	(32.55%)	(45.73%)	(66.42%)	(93.19%)
HEDGE, SHORT EQUAL TOTAL PRIN INDEX	(1.92%)	(5.09%)	(9.89%)	(18.21%)	(42.59%)	(59.93%)	(83.54%)	(96.58%)
HEDGE, SHORT ACTUAL TOTAL PRIN INDEX	(1.74%)	(4.81%)	(9.32%)	(17.12%)	(40.36%)	(58.03%)	(82.78%)	(96.18%)

Small Business Indexes Results

END DATE: 06/30/2018	SBI SBAP INDEX TOTAL RETURN							
INDEX TYPE	1 MONTH	3 MONTH	6 MONTH	1 YEAR	3 YEAR	5 YEAR	10 YEAR	INCEPTION
SBAP, ALL EQUAL INDEX	0.15%	0.74%	0.24%	(0.04%)	(2.24%)	(2.47%)	27.98%	106.88%
SBAP, ALL ACTUAL INDEX	0.05%	0.57%	(0.00%)	(0.49%)	(3.48%)	(3.98%)	29.54%	112.11%
SBAP, LONG EQUAL INDEX	0.03%	0.53%	(0.05%)	(0.57%)	(3.80%)	(4.75%)	27.92%	110.32%
SBAP, LONG ACTUAL INDEX	0.03%	0.54%	(0.04%)	(0.57%)	(3.71%)	(4.31%)	29.36%	112.19%
SBAP, SHORT EQUAL INDEX	0.34%	0.90%	0.40%	0.81%	3.99%	7.87%	33.46%	104.93%
SBAP, SHORT ACTUAL INDEX	0.37%	0.98%	0.63%	1.18%	4.56%	8.86%	34.95%	104.85%
SBAP, ALL EQUAL INCOME INDEX	0.25%	0.75%	1.50%	3.02%	9.66%	17.71%	47.83%	147.54%
SBAP, ALL ACTUAL INCOME INDEX	0.27%	0.81%	1.62%	3.27%	10.52%	19.13%	50.42%	150.71%
SBAP, LONG EQUAL INCOME INDEX	0.27%	0.82%	1.65%	3.33%	10.75%	19.73%	52.07%	159.14%
SBAP, LONG ACTUAL INCOME INDEX	0.27%	0.82%	1.63%	3.30%	10.64%	19.36%	50.87%	151.73%
SBAP, SHORT EQUAL INCOME INDEX	0.17%	0.52%	1.02%	2.03%	6.17%	11.25%	34.66%	112.38%
SBAP, SHORT ACTUAL INCOME INDEX	0.16%	0.48%	0.95%	1.90%	5.75%	10.13%	32.49%	109.31%
SBAP, ALL EQUAL PRICE INDEX	(0.30%)	(0.51%)	(1.88%)	(3.16%)	(4.32%)	(7.01%)	1.22%	1.84%
SBAP, ALL ACTUAL PRICE INDEX	(0.32%)	(0.54%)	(1.92%)	(3.26%)	(4.46%)	(7.65%)	2.32%	3.59%
SBAP, LONG EQUAL PRICE INDEX	(0.32%)	(0.54%)	(1.93%)	(3.27%)	(4.49%)	(7.80%)	1.59%	2.70%
SBAP, LONG ACTUAL PRICE INDEX	(0.32%)	(0.54%)	(1.93%)	(3.27%)	(4.48%)	(7.75%)	2.31%	3.67%
SBAP, SHORT EQUAL PRICE INDEX	(0.23%)	(0.39%)	(1.71%)	(2.80%)	(3.74%)	(4.24%)	(0.14%)	(1.72%)
SBAP, SHORT ACTUAL PRICE INDEX	(0.21%)	(0.35%)	(1.58%)	(2.59%)	(3.46%)	(3.42%)	1.43%	(1.30%)
SBAP, ALL EQUAL PREPAY INDEX	0.07%	0.18%	0.20%	(0.20%)	(5.30%)	(8.17%)	(10.53%)	(13.32%)
SBAP, ALL ACTUAL PREPAY INDEX	0.04%	0.12%	0.08%	(0.49%)	(6.57%)	(9.58%)	(11.79%)	(13.86%)
SBAP, LONG EQUAL PREPAY INDEX	0.04%	0.10%	0.06%	(0.52%)	(6.73%)	(10.06%)	(12.53%)	(15.64%)
SBAP, LONG ACTUAL PREPAY INDEX	0.04%	0.11%	0.07%	(0.53%)	(6.75%)	(9.82%)	(12.04%)	(14.12%)
SBAP, SHORT EQUAL PREPAY INDEX	0.12%	0.24%	0.38%	0.58%	0.62%	0.33%	(0.60%)	(1.27%)
SBAP, SHORT ACTUAL PREPAY INDEX	0.12%	0.26%	0.44%	0.70%	0.87%	0.75%	(0.17%)	(0.93%)
SBAP, ALL EQUAL DEFAULT INDEX	0.02%	0.04%	0.04%	0.03%	(0.31%)	(0.65%)	(1.77%)	(2.06%)
SBAP, ALL ACTUAL DEFAULT INDEX	0.01%	0.02%	0.01%	(0.01%)	(0.44%)	(0.85%)	(2.17%)	(2.41%)
SBAP, LONG EQUAL DEFAULT INDEX	0.00%	0.01%	0.01%	(0.02%)	(0.45%)	(0.87%)	(2.01%)	(2.29%)
SBAP, LONG ACTUAL DEFAULT INDEX	0.00%	0.01%	0.01%	(0.01%)	(0.46%)	(0.88%)	(2.21%)	(2.45%)
SBAP, SHORT EQUAL DEFAULT INDEX	0.05%	0.07%	0.08%	0.12%	0.15%	0.13%	(0.36%)	(0.58%)
SBAP, SHORT ACTUAL DEFAULT INDEX	0.05%	0.08%	0.09%	0.15%	0.19%	0.20%	(0.31%)	(0.55%)
SBAP, ALL EQUAL VOL PREPAY INDEX	0.05%	0.14%	0.16%	(0.24%)	(5.01%)	(7.56%)	(8.92%)	(11.50%)
SBAP, ALL ACTUAL VOL PREPAY INDEX	0.04%	0.10%	0.07%	(0.48%)	(6.16%)	(8.80%)	(9.83%)	(11.72%)
SBAP, LONG EQUAL VOL PREPAY INDEX	0.04%	0.09%	0.06%	(0.50%)	(6.30%)	(9.27%)	(10.73%)	(13.66%)
SBAP, LONG ACTUAL VOL PREPAY INDEX	0.03%	0.10%	0.06%	(0.51%)	(6.32%)	(9.02%)	(10.05%)	(11.97%)
SBAP, SHORT EQUAL VOL PREPAY INDEX	0.07%	0.17%	0.29%	0.46%	0.47%	0.20%	(0.24%)	(0.69%)
SBAP, SHORT ACTUAL VOL PREPAY INDEX	0.07%	0.18%	0.35%	0.55%	0.68%	0.55%	0.14%	(0.38%)
SBAP, ALL EQUAL SCHED PRIN INDEX	0.13%	0.32%	0.45%	0.40%	(1.60%)	(2.95%)	(4.39%)	(5.31%)
SBAP, ALL ACTUAL SCHED PRIN INDEX	0.06%	0.18%	0.25%	0.09%	(2.17%)	(3.47%)	(4.58%)	(5.17%)
SBAP, LONG EQUAL SCHED PRIN INDEX	0.05%	0.15%	0.20%	(0.00%)	(2.49%)	(4.04%)	(5.33%)	(6.31%)
SBAP, LONG ACTUAL SCHED PRIN INDEX	0.05%	0.16%	0.22%	0.04%	(2.28%)	(3.62%)	(4.71%)	(5.30%)
SBAP, SHORT EQUAL SCHED PRIN INDEX	0.27%	0.53%	0.74%	1.06%	1.12%	0.92%	(0.15%)	(0.56%)
SBAP, SHORT ACTUAL SCHED PRIN INDEX	0.30%	0.59%	0.82%	1.23%	1.53%	1.60%	0.60%	0.08%
SBAP, ALL EQUAL TOTAL PRIN INDEX	0.21%	0.50%	0.65%	0.20%	(6.83%)	(10.88%)	(14.47%)	(17.93%)
SBAP, ALL ACTUAL TOTAL PRIN INDEX	0.10%	0.30%	0.33%	(0.40%)	(8.60%)	(12.72%)	(15.83%)	(18.32%)
SBAP, LONG EQUAL TOTAL PRIN INDEX	0.09%	0.25%	0.26%	(0.52%)	(9.06%)	(13.70%)	(17.20%)	(20.97%)
SBAP, LONG ACTUAL TOTAL PRIN INDEX	0.09%	0.27%	0.29%	(0.49%)	(8.89%)	(13.10%)	(16.19%)	(18.68%)
SBAP, SHORT EQUAL TOTAL PRIN INDEX	0.39%	0.77%	1.12%	1.65%	1.75%	1.25%	(0.75%)	(1.82%)
SBAP, SHORT ACTUAL TOTAL PRIN INDEX	0.42%	0.85%	1.27%	1.93%	2.41%	2.35%	0.42%	(0.85%)

Small Business Indexes Results

END DATE: 06/30/2018	SBI SBIC INDEX TOTAL RETURN							
INDEX TYPE	1 MONTH	3 MONTH	6 MONTH	1 YEAR	3 YEAR	5 YEAR	10 YEAR	INCEPTION
SBIC, ALL EQUAL INDEX	(0.11%)	0.36%	(0.03%)	(0.09%)	4.40%	8.32%	41.16%	129.74%
SBIC, ALL ACTUAL INDEX	(0.13%)	0.35%	(0.09%)	(0.08%)	4.87%	8.56%	44.91%	139.87%
SBIC, ALL EQUAL INCOME INDEX	0.23%	0.71%	1.41%	2.84%	9.04%	16.52%	45.41%	141.53%
SBIC, ALL ACTUAL INCOME INDEX	0.23%	0.69%	1.38%	2.77%	8.65%	15.44%	42.98%	133.27%
SBIC, ALL EQUAL PRICE INDEX	(0.34%)	(0.49%)	(1.56%)	(2.90%)	(3.62%)	(5.08%)	2.41%	3.55%
SBIC, ALL ACTUAL PRICE INDEX	(0.35%)	(0.51%)	(1.61%)	(2.90%)	(3.15%)	(4.91%)	4.94%	8.85%
SBIC, ALL EQUAL PREPAY INDEX	0.00%	0.15%	0.15%	0.06%	(0.65%)	(2.07%)	(5.22%)	(8.14%)
SBIC, ALL ACTUAL PREPAY INDEX	0.00%	0.17%	0.17%	0.13%	(0.33%)	(1.11%)	(3.43%)	(5.54%)
SBIC, ALL EQUAL DEFAULT INDEX	0.00%	0.00%	0.00%	(0.01%)	(0.02%)	(0.22%)	(0.66%)	(1.39%)
SBIC, ALL ACTUAL DEFAULT INDEX	0.00%	0.00%	0.00%	(0.00%)	(0.01%)	(0.13%)	(0.46%)	(1.07%)
SBIC, ALL EQUAL VOL PREPAY INDEX	0.00%	0.15%	0.15%	0.07%	(0.63%)	(1.85%)	(4.59%)	(6.85%)
SBIC, ALL ACTUAL VOL PREPAY INDEX	0.00%	0.17%	0.17%	0.13%	(0.33%)	(0.98%)	(2.98%)	(4.51%)
SBIC, ALL EQUAL SCHED PRIN INDEX	0.00%	0.00%	0.00%	0.00%	0.00%	0.00%	0.00%	0.00%
SBIC, ALL ACTUAL SCHED PRIN INDEX	0.00%	0.00%	0.00%	0.00%	0.00%	0.00%	0.00%	0.00%
SBIC, ALL EQUAL TOTAL PRIN INDEX	0.00%	0.15%	0.15%	0.06%	(0.65%)	(2.07%)	(5.22%)	(8.14%)
SBIC, ALL ACTUAL TOTAL PRIN INDEX	0.00%	0.17%	0.17%	0.13%	(0.33%)	(1.11%)	(3.43%)	(5.54%)



SB Indexes, LLC

Through the joint venture of Ryan ALM, Inc. and GLS, both companies have brought their unique capabilities together to create the first Total Return Indexes for SBA 7(a) Pools and SBA 7(a) Interest-Only Strips, with a history going back to January 1st, 2000.

Using the “Ryan Rules” for index creation, the SBI indexes represent best practices in both structure and transparency.

Principals:

Ronald J. Ryan, CFA, Founder and CEO of Ryan ALM, Inc. Ron has a long history of designing bond indexes, starting at Lehman Brothers, where he designed most of the popular Lehman bond indexes. Over his distinguished career, Ron and his team have designed hundreds of bond indexes and ETFs.

Bob Judge, Partner, GLS. Bob, a recognized expert in the valuation of SBA-related assets as well as the SBA Secondary Market and is the editor of The CPR Report, a widely-read monthly publication that tracks SBA loan defaults, prepayment and secondary market activity.

Small Business Indexes Results

END DATE: 06/30/2018	SBI COMPOSITE INDEX TOTAL RETURN							
INDEX TYPE	1 MONTH	3 MONTH	6 MONTH	1 YEAR	3 YEAR	5 YEAR	10 YEAR	INCEPTION
COMP, ALL EQUAL INDEX	(0.56%)	(0.19%)	(0.28%)	0.25%	0.76%	1.67%	37.48%	120.11%
COMP, ALL ACTUAL INDEX	(0.62%)	(0.28%)	(0.42%)	0.27%	0.65%	1.33%	36.38%	118.62%
COMP, LONG EQUAL INDEX	(0.48%)	(0.17%)	(0.38%)	0.44%	(0.46%)	(0.09%)	39.23%	126.06%
COMP, LONG ACTUAL INDEX	(0.46%)	(0.14%)	(0.36%)	0.50%	(0.37%)	0.20%	36.68%	119.88%
COMP, SHORT EQUAL INDEX	(0.92%)	(0.51%)	(0.38%)	(1.02%)	2.13%	3.97%	32.97%	107.02%
COMP, SHORT ACTUAL INDEX	(1.02%)	(0.63%)	(0.57%)	(1.31%)	2.71%	4.20%	32.98%	108.51%
COMP, ALL EQUAL INCOME INDEX	0.29%	0.88%	1.74%	3.47%	10.30%	18.08%	53.87%	164.83%
COMP, ALL ACTUAL INCOME INDEX	0.30%	0.91%	1.80%	3.58%	10.66%	18.70%	51.09%	156.01%
COMP, LONG EQUAL INCOME INDEX	0.29%	0.90%	1.79%	3.57%	10.70%	19.00%	57.08%	173.14%
COMP, LONG ACTUAL INCOME INDEX	0.29%	0.89%	1.77%	3.53%	10.58%	18.76%	51.98%	157.64%
COMP, SHORT EQUAL INCOME INDEX	0.30%	0.92%	1.83%	3.66%	10.85%	18.72%	50.96%	158.94%
COMP, SHORT ACTUAL INCOME INDEX	0.31%	0.94%	1.88%	3.72%	10.86%	18.41%	47.35%	148.65%
COMP, ALL EQUAL PRICE INDEX	(0.82%)	(0.98%)	(1.68%)	(2.13%)	(3.02%)	(4.86%)	3.39%	4.10%
COMP, ALL ACTUAL PRICE INDEX	(0.86%)	(1.03%)	(1.75%)	(1.99%)	(2.69%)	(4.90%)	4.91%	6.27%
COMP, LONG EQUAL PRICE INDEX	(0.73%)	(0.92%)	(1.72%)	(1.78%)	(2.63%)	(4.78%)	4.71%	5.83%
COMP, LONG ACTUAL PRICE INDEX	(0.70%)	(0.90%)	(1.71%)	(1.70%)	(2.54%)	(4.72%)	5.36%	6.71%
COMP, SHORT EQUAL PRICE INDEX	(1.10%)	(1.18%)	(1.61%)	(3.30%)	(4.29%)	(6.01%)	0.84%	0.49%
COMP, SHORT ACTUAL PRICE INDEX	(1.21%)	(1.32%)	(1.83%)	(3.64%)	(3.92%)	(5.95%)	2.56%	3.68%
COMP, ALL EQUAL PREPAY INDEX	(0.05%)	(0.13%)	(0.35%)	(0.87%)	(4.26%)	(6.83%)	(9.46%)	(15.16%)
COMP, ALL ACTUAL PREPAY INDEX	(0.06%)	(0.15%)	(0.39%)	(0.97%)	(4.79%)	(7.39%)	(9.85%)	(14.81%)
COMP, LONG EQUAL PREPAY INDEX	(0.05%)	(0.18%)	(0.43%)	(1.08%)	(5.73%)	(8.73%)	(11.13%)	(16.84%)
COMP, LONG ACTUAL PREPAY INDEX	(0.05%)	(0.17%)	(0.42%)	(1.08%)	(5.76%)	(8.61%)	(10.81%)	(15.61%)
COMP, SHORT EQUAL PREPAY INDEX	(0.08%)	(0.12%)	(0.33%)	(0.74%)	(2.18%)	(4.13%)	(7.85%)	(14.03%)
COMP, SHORT ACTUAL PREPAY INDEX	(0.07%)	(0.12%)	(0.33%)	(0.72%)	(2.02%)	(3.71%)	(7.09%)	(12.62%)
COMP, ALL EQUAL DEFAULT INDEX	(0.00%)	(0.02%)	(0.05%)	(0.10%)	(0.39%)	(0.78%)	(1.96%)	(2.96%)
COMP, ALL ACTUAL DEFAULT INDEX	(0.01%)	(0.03%)	(0.06%)	(0.11%)	(0.44%)	(0.86%)	(2.18%)	(3.08%)
COMP, LONG EQUAL DEFAULT INDEX	(0.01%)	(0.03%)	(0.06%)	(0.12%)	(0.51%)	(0.95%)	(2.09%)	(3.02%)
COMP, LONG ACTUAL DEFAULT INDEX	(0.01%)	(0.03%)	(0.06%)	(0.12%)	(0.51%)	(0.96%)	(2.24%)	(3.09%)
COMP, SHORT EQUAL DEFAULT INDEX	(0.01%)	(0.03%)	(0.06%)	(0.11%)	(0.25%)	(0.59%)	(1.98%)	(3.28%)
COMP, SHORT ACTUAL DEFAULT INDEX	(0.01%)	(0.03%)	(0.06%)	(0.11%)	(0.24%)	(0.56%)	(1.92%)	(3.12%)
COMP, ALL EQUAL VOL PREPAY INDEX	(0.04%)	(0.11%)	(0.30%)	(0.77%)	(3.89%)	(6.10%)	(7.65%)	(12.57%)
COMP, ALL ACTUAL VOL PREPAY INDEX	(0.05%)	(0.12%)	(0.33%)	(0.86%)	(4.36%)	(6.59%)	(7.85%)	(12.10%)
COMP, LONG EQUAL VOL PREPAY INDEX	(0.04%)	(0.14%)	(0.37%)	(0.96%)	(5.25%)	(7.85%)	(9.23%)	(14.24%)
COMP, LONG ACTUAL VOL PREPAY INDEX	(0.04%)	(0.14%)	(0.36%)	(0.96%)	(5.27%)	(7.72%)	(8.76%)	(12.92%)
COMP, SHORT EQUAL VOL PREPAY INDEX	(0.06%)	(0.09%)	(0.27%)	(0.63%)	(1.94%)	(3.55%)	(6.00%)	(11.11%)
COMP, SHORT ACTUAL VOL PREPAY INDEX	(0.06%)	(0.09%)	(0.27%)	(0.61%)	(1.78%)	(3.16%)	(5.26%)	(9.80%)
COMP, ALL EQUAL SCHED PRIN INDEX	0.03%	0.05%	0.03%	(0.14%)	(1.60%)	(2.86%)	(4.54%)	(5.88%)
COMP, ALL ACTUAL SCHED PRIN INDEX	0.00%	(0.00%)	(0.05%)	(0.26%)	(1.83%)	(3.06%)	(4.55%)	(5.67%)
COMP, LONG EQUAL SCHED PRIN INDEX	0.01%	0.03%	0.01%	(0.19%)	(2.04%)	(3.39%)	(4.74%)	(5.95%)
COMP, LONG ACTUAL SCHED PRIN INDEX	0.01%	0.04%	0.03%	(0.16%)	(1.89%)	(3.10%)	(4.29%)	(5.21%)
COMP, SHORT EQUAL SCHED PRIN INDEX	(0.04%)	(0.12%)	(0.24%)	(0.52%)	(1.59%)	(2.81%)	(5.21%)	(7.44%)
COMP, SHORT ACTUAL SCHED PRIN INDEX	(0.04%)	(0.12%)	(0.25%)	(0.53%)	(1.59%)	(2.84%)	(5.29%)	(7.43%)
COMP, ALL EQUAL TOTAL PRIN INDEX	(0.02%)	(0.08%)	(0.32%)	(1.01%)	(5.80%)	(9.50%)	(13.58%)	(20.15%)
COMP, ALL ACTUAL TOTAL PRIN INDEX	(0.06%)	(0.16%)	(0.43%)	(1.23%)	(6.53%)	(10.23%)	(13.96%)	(19.64%)
COMP, LONG EQUAL TOTAL PRIN INDEX	(0.04%)	(0.14%)	(0.42%)	(1.27%)	(7.66%)	(11.82%)	(15.35%)	(21.80%)
COMP, LONG ACTUAL TOTAL PRIN INDEX	(0.04%)	(0.13%)	(0.38%)	(1.24%)	(7.54%)	(11.45%)	(14.64%)	(20.01%)
COMP, SHORT EQUAL TOTAL PRIN INDEX	(0.11%)	(0.24%)	(0.57%)	(1.25%)	(3.73%)	(6.82%)	(12.66%)	(20.43%)
COMP, SHORT ACTUAL TOTAL PRIN INDEX	(0.11%)	(0.24%)	(0.58%)	(1.25%)	(3.57%)	(6.44%)	(12.01%)	(19.12%)



GOVERNMENT LOAN SOLUTIONS

The nationwide leader in the valuation of SBA and USDA assets.

GLS provides valuations for:

- **SBA 7(a), 504 1st mortgage and USDA servicing rights**
- **SBA 7(a) and 504 1st mortgage pools**
- **Guaranteed and non-guaranteed 7(a) loan portions Interest-only portions of SBA and USDA loans**

In these times of market uncertainty, let GLS help you in determining the value of your SBA and USDA related-assets.

For further information, please contact Bob Judge at (216) 456-2480 ext. 133 or at

504 Debenture Prepayment Speed Commentary

This month, 20 year debenture prepayment speeds rose by 21% to CPR 9.39%, going back above CPR 9% after one-month below that benchmark. As for 10-year paper, it rose by 52% to CPR 10.08% from CPR 6.61% two months ago.

Returning to 20s, the reason for the increase in the CPR was both voluntary prepayments (CRR) and defaults (CDR) rose. Voluntary prepaes increased by 19% to CRR 8.90% from CRR 7.49%. As for defaults, they rose by 66% to CDR 0.51% from CDR 0.31%.

As for 10s, a rise in the CRR offset a drop in the CDR. The CRR rose to CRR 10.04% from CRR 4.13% while the CDR fell to CDR 0.05% from CDR 2.54% in April.

While this month reflected a rise in both CPRs, we believe the trend is still toward lower prepaes due to the fixed rate element of 504 debentures.

For further information on the terminology and concepts used in this article, please refer to the "Glossary and Definitions" at the end of the report.

Charts & graphs begin on next page



Put One of America's Top Teams of SBA Specialists to Work for You.

Signature Bank has been providing SBA loan pools to banks, credit unions, pension funds, insurance companies and investment advisors since 2001. Contact us to explore how we may serve you.

- SBA Loans and Pools
- USDA Loans (B+I and FSA)
- Assistance Meeting CRA Guidelines

Signature Bank SBA Trading and Sales

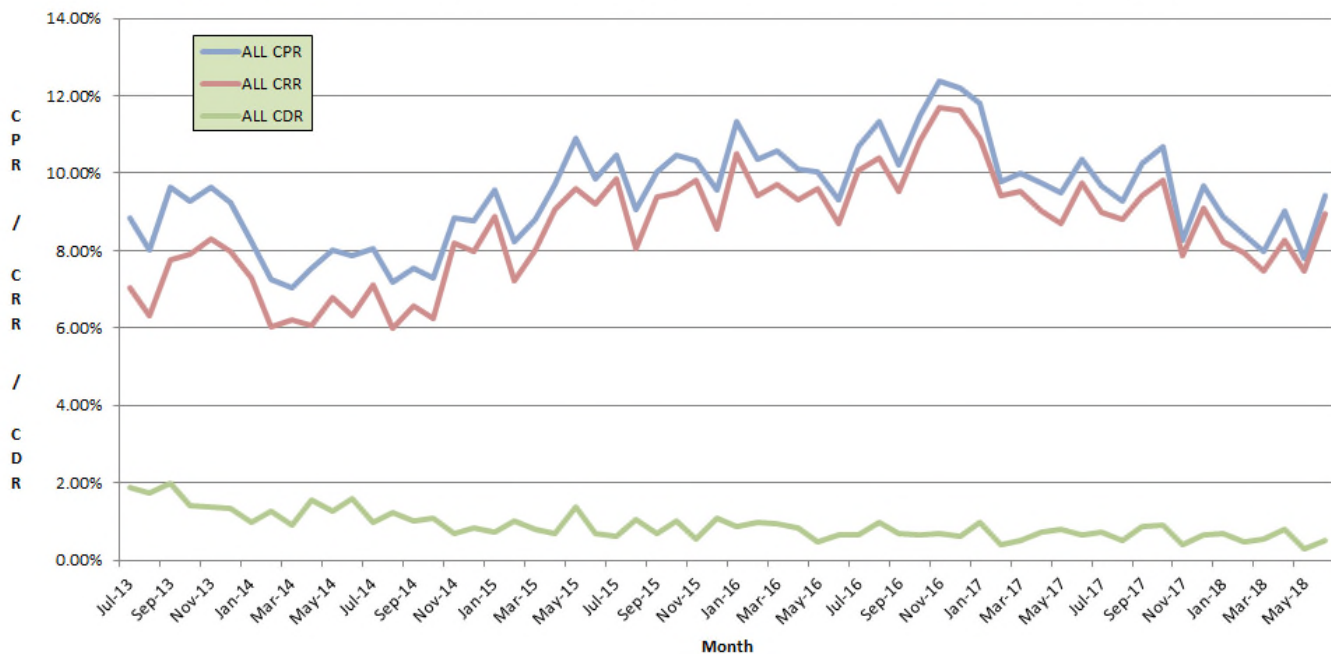
9 Greenway Plaza, Suite 3120, Houston, TX 77046
Phone: (713) 300-6100 | Toll Free: (866) 750-7150
www.signatureny.com

Signature Bank's Houston, Texas, office is a Representative Office, and not a branch of the Bank. The Representative Office does not engage in general banking transactions. Signature Bank is a Member FDIC.

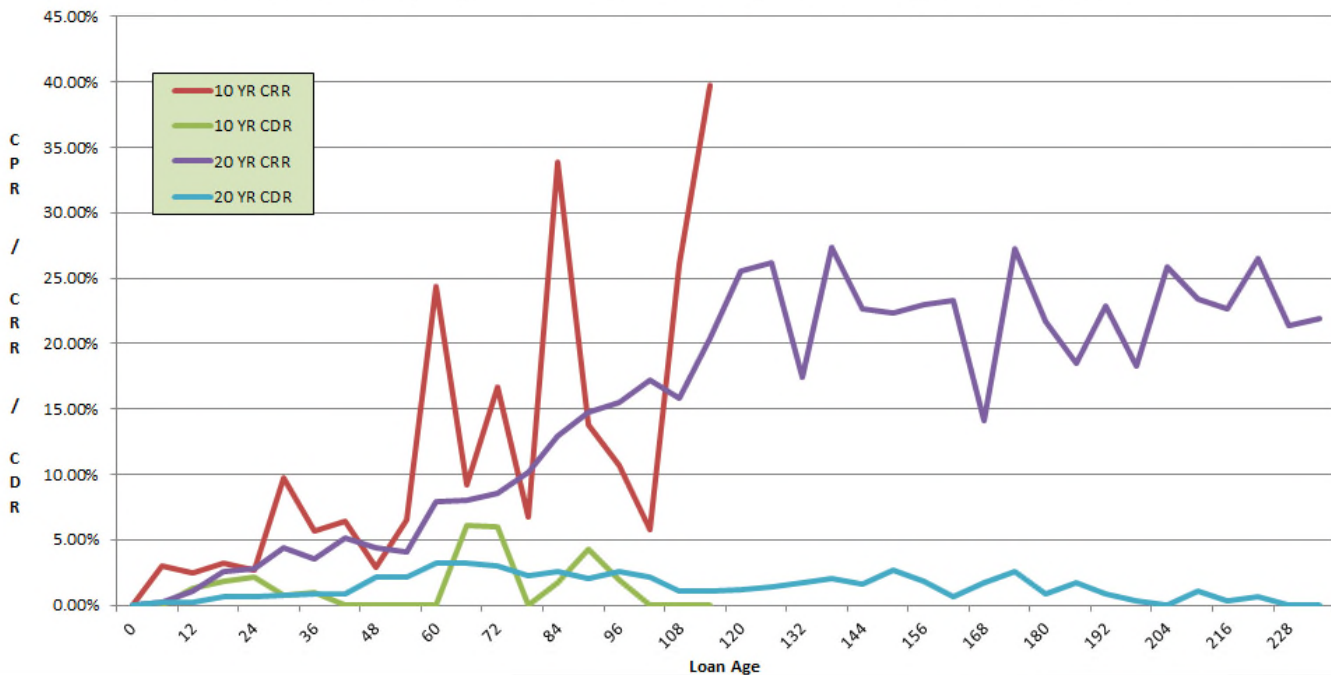
504 Debenture Prepayment Speed Results

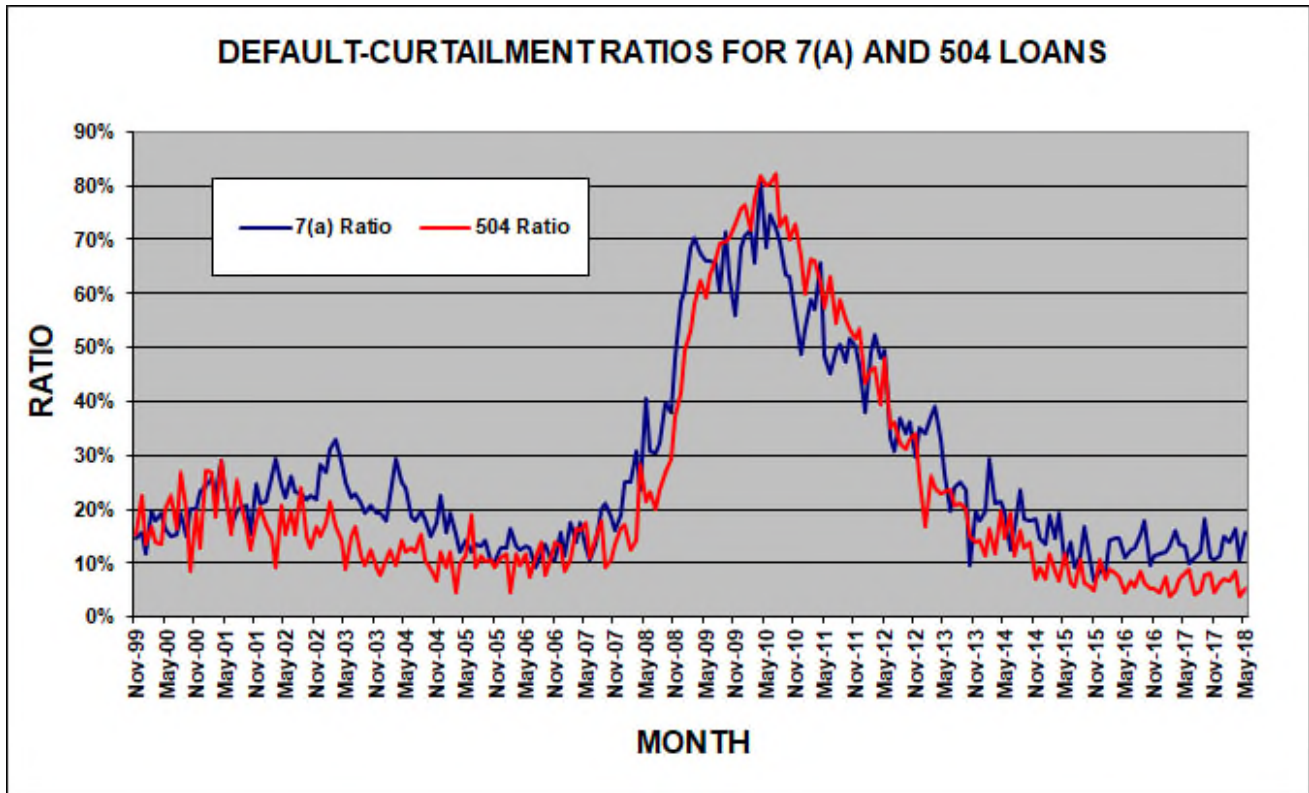
FACTOR MONTH	20 YR. CPR	20 YR. CRR	20 YR. CDR	10 YR. CPR	10 YR. CRR	10 YR. CDR	ALL CPR	ALL CRR	ALL CDR	WAVG AGE ALL	WAVG AGE 20 YR.	WAVG AGE 10 YR.
Jul-13	8.83%	7.03%	1.87%	NA	NA	NA	8.83%	7.03%	1.87%	45.44	45.44	NA
Aug-13	7.94%	6.27%	1.72%	9.05%	7.11%	2.01%	8.00%	6.31%	1.74%	45.84	46.94	25.33
Sep-13	9.66%	7.75%	1.98%	NA	NA	NA	9.66%	7.75%	1.98%	46.18	46.18	NA
Oct-13	9.37%	7.98%	1.44%	7.28%	6.48%	0.83%	9.26%	7.90%	1.41%	46.06	47.29	24.57
Nov-13	9.64%	8.32%	1.38%	NA	NA	NA	9.64%	8.32%	1.38%	48.13	48.13	NA
Dec-13	9.54%	8.24%	1.36%	3.36%	2.59%	0.78%	9.26%	7.98%	1.34%	45.39	46.33	26.88
Jan-14	8.24%	7.28%	0.99%	NA	NA	NA	8.24%	7.28%	0.99%	47.16	47.16	NA
Feb-14	7.24%	6.00%	1.28%	7.88%	6.73%	1.19%	7.27%	6.04%	1.28%	46.46	47.47	27.34
Mar-14	7.06%	6.20%	0.89%	NA	NA	NA	7.06%	6.20%	0.89%	46.58	46.58	NA
Apr-14	7.59%	6.20%	1.44%	7.01%	3.31%	3.77%	7.56%	6.05%	1.56%	47.17	48.44	25.72
May-14	8.00%	6.80%	1.25%	NA	NA	NA	8.00%	6.80%	1.25%	50.01	50.01	NA
Jun-14	7.74%	6.19%	1.60%	10.43%	8.94%	1.55%	7.86%	6.32%	1.59%	46.32	47.23	27.97
Jul-14	8.06%	7.11%	0.99%	NA	NA	NA	8.06%	7.11%	0.99%	48.70	48.70	NA
Aug-14	7.29%	6.08%	1.25%	4.81%	4.14%	0.69%	7.17%	5.99%	1.22%	47.22	48.16	29.10
Sep-14	7.54%	6.56%	1.01%	NA	NA	NA	7.54%	6.56%	1.01%	48.54	48.54	NA
Oct-14	7.43%	6.38%	1.08%	4.84%	3.61%	1.25%	7.29%	6.24%	1.09%	48.94	50.23	27.55
Nov-14	8.85%	8.20%	0.68%	NA	NA	NA	8.85%	8.20%	0.68%	50.41	50.41	NA
Dec-14	8.90%	8.08%	0.86%	6.37%	5.65%	0.74%	8.79%	7.97%	0.85%	47.98	48.85	30.15
Jan-15	9.56%	8.88%	0.71%	NA	NA	NA	9.56%	8.88%	0.71%	50.24	50.24	NA
Feb-15	8.27%	7.25%	1.05%	7.23%	6.60%	0.65%	8.22%	7.22%	1.03%	48.85	49.72	31.56
Mar-15	8.80%	8.03%	0.81%	NA	NA	NA	8.80%	8.03%	0.81%	49.05	49.05	NA
Apr-15	9.65%	8.99%	0.69%	10.87%	9.95%	0.97%	9.72%	9.04%	0.70%	49.63	50.76	29.98
May-15	10.92%	9.60%	1.38%	NA	NA	NA	10.92%	9.60%	1.38%	51.04	51.04	NA
Jun-15	10.11%	9.45%	0.70%	4.62%	4.23%	0.40%	9.87%	9.21%	0.68%	49.15	49.98	32.22
Jul-15	10.45%	9.87%	0.62%	NA	NA	NA	10.45%	9.87%	0.62%	50.94	50.94	NA
Aug-15	9.09%	8.06%	1.07%	8.31%	7.92%	0.41%	9.05%	8.05%	1.04%	49.98	50.74	34.07
Sep-15	10.02%	9.38%	0.68%	NA	NA	NA	10.02%	9.38%	0.68%	49.79	49.79	NA
Oct-15	10.48%	9.59%	0.93%	10.10%	7.36%	2.85%	10.46%	9.48%	1.03%	50.62	51.69	31.61
Nov-15	10.33%	9.81%	0.55%	NA	NA	NA	10.33%	9.81%	0.55%	51.93	51.93	NA
Dec-15	9.60%	8.64%	1.01%	9.09%	6.63%	2.55%	9.58%	8.55%	1.08%	50.80	51.69	32.95
Jan-16	11.32%	10.49%	0.88%	NA	NA	NA	11.32%	10.49%	0.88%	50.96	50.96	NA
Feb-16	10.47%	9.64%	0.88%	8.04%	4.91%	3.21%	10.36%	9.43%	0.98%	51.01	51.76	35.24
Mar-16	10.59%	9.71%	0.93%	NA	NA	NA	10.59%	9.71%	0.93%	50.66	50.66	NA
Apr-16	10.15%	9.49%	0.69%	9.22%	6.21%	3.10%	10.11%	9.33%	0.82%	51.72	52.65	34.48
May-16	10.05%	9.59%	0.48%	NA	NA	NA	10.05%	9.59%	0.48%	51.65	51.65	NA
Jun-16	9.36%	8.77%	0.63%	8.48%	7.02%	1.51%	9.32%	8.69%	0.67%	51.66	52.52	34.27
Jul-16	10.67%	10.07%	0.64%	NA	NA	NA	10.67%	10.07%	0.64%	51.26	51.26	NA
Aug-16	11.31%	10.41%	0.95%	11.74%	10.14%	1.69%	11.33%	10.40%	0.98%	51.55	52.22	36.87
Sep-16	10.20%	9.53%	0.70%	NA	NA	NA	10.20%	9.53%	0.70%	51.04	51.04	NA
Oct-16	11.60%	11.00%	0.63%	9.02%	7.80%	1.27%	11.47%	10.85%	0.66%	51.54	52.22	37.77
Nov-16	12.37%	11.71%	0.70%	NA	NA	NA	12.37%	11.71%	0.70%	51.78	51.78	NA
Dec-16	12.46%	11.88%	0.63%	6.75%	6.27%	0.49%	12.21%	11.63%	0.62%	51.97	52.66	37.34
Jan-17	11.82%	10.91%	0.96%	NA	NA	NA	11.82%	10.91%	0.96%	50.66	50.66	NA
Feb-17	9.81%	9.45%	0.38%	8.85%	8.41%	0.46%	9.77%	9.41%	0.39%	51.89	52.46	38.80
Mar-17	10.01%	9.52%	0.51%	NA	NA	NA	10.01%	9.52%	0.51%	51.37	51.37	NA
Apr-17	9.70%	9.15%	0.57%	10.52%	6.62%	4.04%	9.73%	9.04%	0.73%	51.37	51.95	39.08
May-17	9.50%	8.72%	0.81%	NA	NA	NA	9.50%	8.72%	0.81%	51.66	51.66	NA
Jun-17	10.30%	9.79%	0.54%	11.31%	8.46%	2.99%	10.35%	9.74%	0.64%	52.11	52.72	38.28
Jul-17	9.67%	8.97%	0.73%	NA	NA	NA	9.67%	8.97%	0.73%	50.39	50.39	NA
Aug-17	9.14%	8.75%	0.41%	12.74%	10.05%	2.84%	9.28%	8.80%	0.50%	52.34	52.80	40.52
Sep-17	10.24%	9.43%	0.86%	NA	NA	NA	10.24%	9.43%	0.86%	52.27	52.27	NA
Oct-17	10.72%	9.86%	0.91%	10.17%	9.22%	1.00%	10.70%	9.83%	0.91%	51.33	51.92	38.59
Nov-17	8.25%	7.87%	0.40%	NA	NA	NA	8.25%	7.87%	0.40%	52.48	52.48	NA
Dec-17	9.58%	8.99%	0.62%	12.25%	11.23%	1.08%	9.69%	9.08%	0.64%	52.69	53.26	39.04
Jan-18	8.87%	8.23%	0.67%	NA	NA	NA	8.87%	8.23%	0.67%	50.63	50.63	NA
Feb-18	8.39%	7.98%	0.43%	8.47%	6.78%	1.75%	8.39%	7.94%	0.48%	53.14	53.60	40.96
Mar-18	7.97%	7.46%	0.53%	NA	NA	NA	7.97%	7.46%	0.53%	52.47	52.47	NA
Apr-18	9.14%	8.46%	0.71%	6.61%	4.13%	2.54%	9.04%	8.28%	0.79%	50.98	51.55	38.47
May-18	7.78%	7.49%	0.31%	NA	NA	NA	7.78%	7.49%	0.31%	52.76	52.76	NA
Jun-18	9.39%	8.90%	0.51%	10.08%	10.04%	0.05%	9.41%	8.94%	0.49%	57.27	57.82	43.12

504 DCPC Prepayment Speeds by Month - Last 5 Years



504 DCPC Prepayment Speeds by Loan Age - Last 5 Years





Default—Curtailment Ratios

In our Default-Curtailment Ratios (DCR) we witnessed an increase in both the 7a and 504 ratios in June.

Please note that an increase in the DCR does not necessarily mean that the default rate is rising, only that the percentage of early curtailments attributable to defaults has increased.

SBA 7(a) Default Ratios

This month, the 7(a) DCR registered a 48% increase to 15.88% from 10.74% previously. This reading represents the 45th consecutive reading below 20%.

The cause of this increase was the fact that defaults rose by a greater percentage than voluntary prepayments.

Turning to actual dollar amounts, defaults rose by 81% to \$104 million from \$58 million. As for voluntary prepayments, they increased by 15% to \$551 million from \$478 million, previously.

SBA 504 Default Ratios

This month, the 504 DCR rose by 32% to 5.12% from 3.89%, previously. With defaults rising by a greater percentage than voluntary prepayments, the ratio increased.

Specifically, the dollar amount of defaults increased by \$3 million to \$10 million (+53%). As for voluntary prepayments, they rose by \$24 million to \$182 million (+15%).

Summary

Even with both ratios rising this month, they remain in good standing from a default perspective.

For further information on the terminology and concepts used in this article, please refer to the "Glossary and Definitions" at the end of the report.

GLS Value Indices Update

For June, the GLS Value Indices rose in four out of six sub-indices as secondary market decreases offset rising prepayment speeds.

The Base Rate / Libor spread fell by 1 basis point to +242 from +243 while prepayment speeds rose in five out of six buckets.

By the end of June, the secondary market was down almost 2 points in both 25 year and 10 year paper. Other, lower volume maturities also witnessed significant price decreases. As for 10-year paper, it fell by

1.875% to 109.875, while 25-year paper fell by 1.675% to 115.95.

Turning to the specifics, the largest increase was seen in the GLS VI-3, which rose by 308% to +53 basis points. The other increases, by order of magnitude, were seen in VI-2 (+76% to +58), VI-5 (+48% to 71) and VI-4 (+14% to 72).

Decreases were seen in VI-1 (-429% to 23) and VI-6 (-380% to 14).

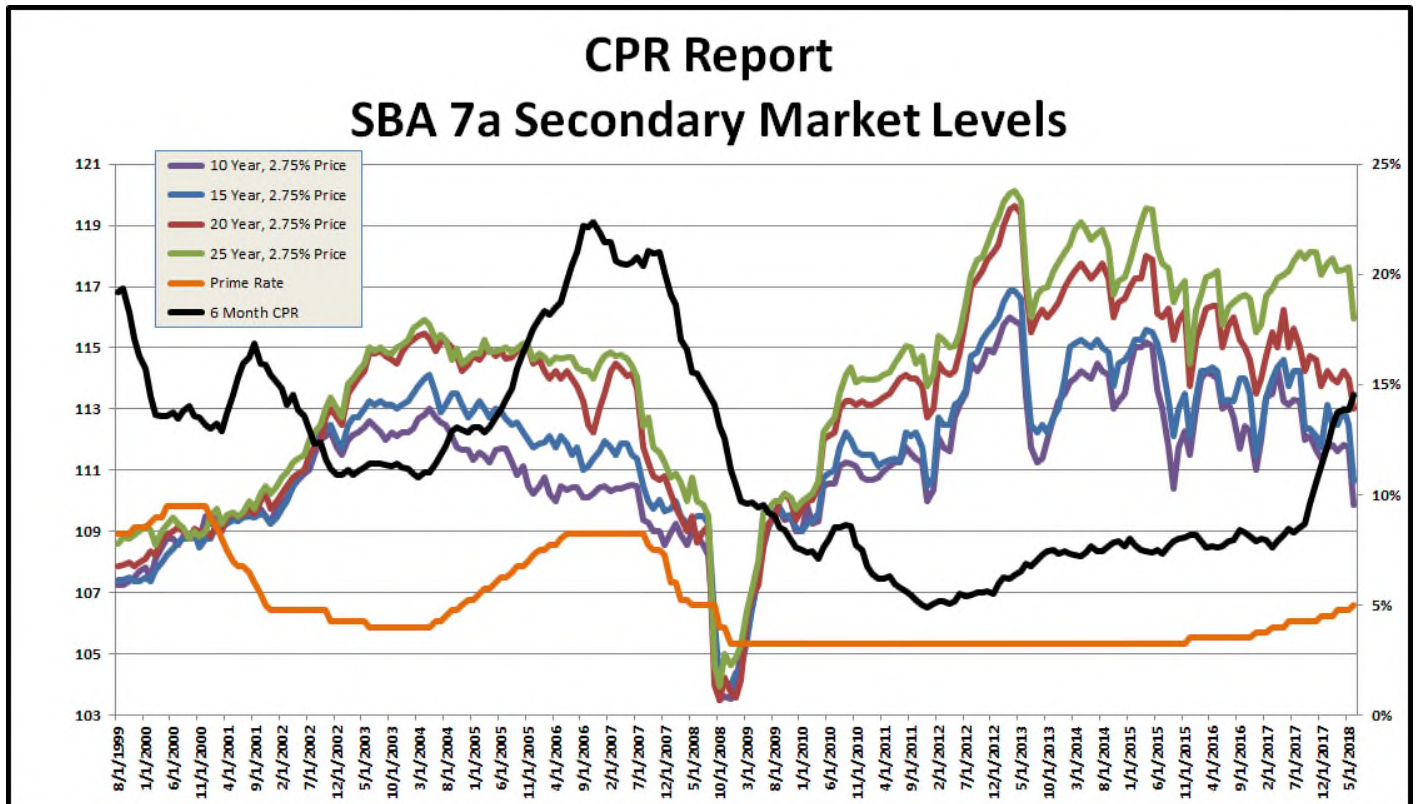
Large price decreases had a positive impact on the indices this month and pushed all of them into positive spread territory for the first time in 4 months.

For further information on the terminology and concepts used in this article, please refer to the "Glossary and Definitions" at the end of the report.

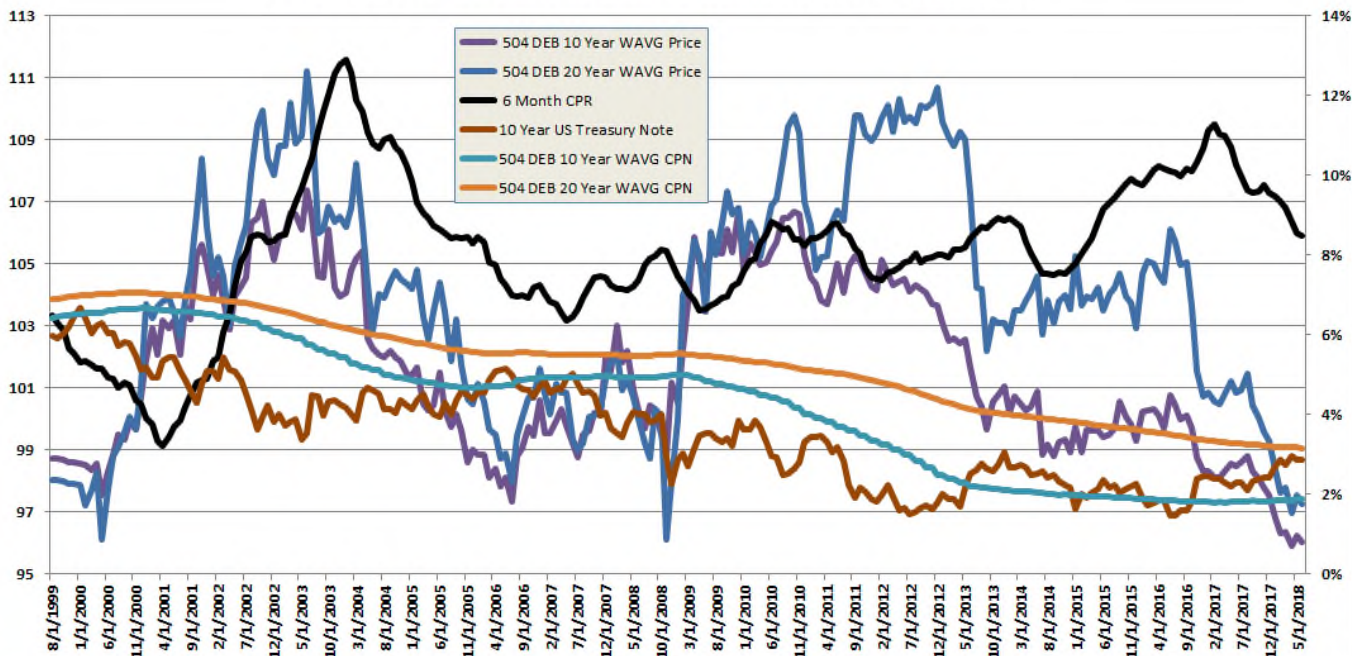
Graphs continue on next page

7(a) Secondary Market Pricing Grid: June 2017

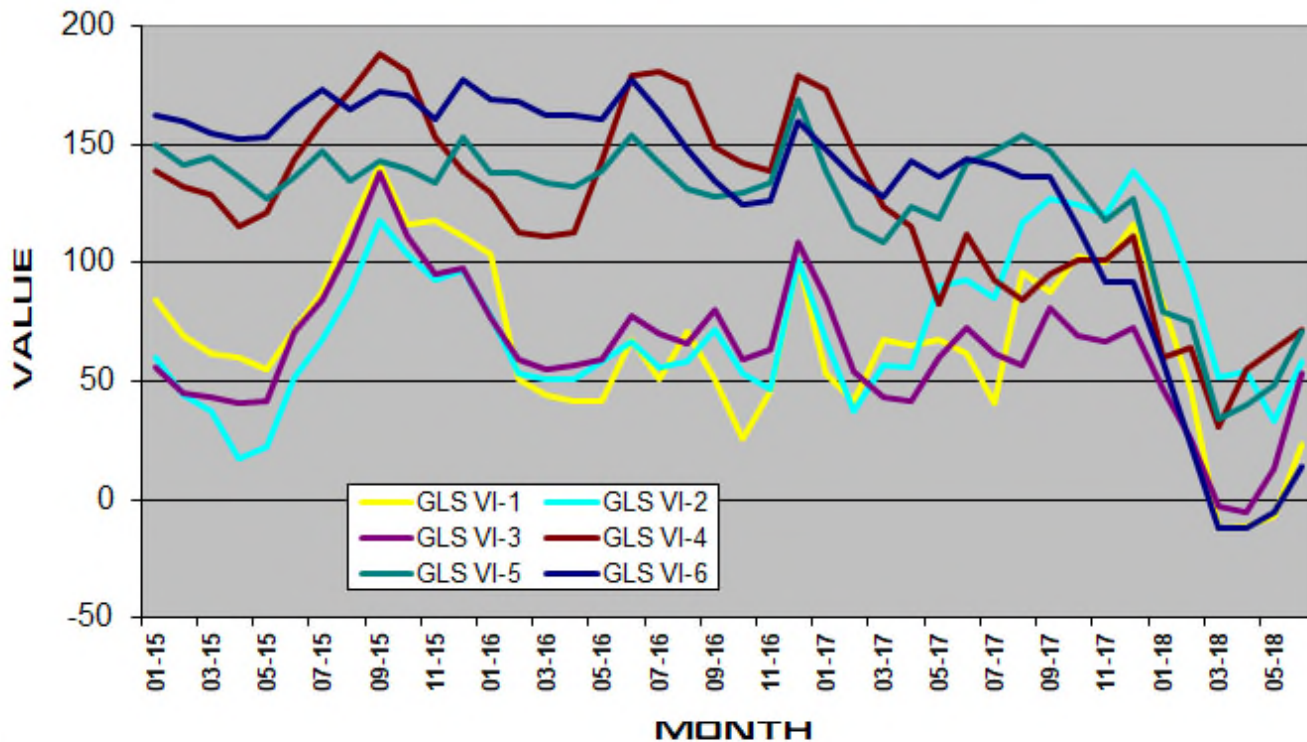
Maturity	Gross Margin	Net Margin	Servicing	This Month Price	Last Month Price	3-Mos. Ago Price	6-Mos. Ago Price	1-Yr. Ago Price
10 yrs.	2.75%	1.075%	1.00%	109.875	111.750	111.625	111.375	113.150
15 yrs.	2.75%	1.075%	1.00%	110.650	112.500	112.500	111.750	113.750
20 yrs.	2.75%	1.075%	1.00%	113.000	114.000	113.875	113.750	115.000
25 yrs.	2.75%	1.075%	1.00%	115.950	117.625	117.500	117.375	117.500



CPR Report SBA 504 Debenture Market Levels



GLS VALUE INDICES



GLS Value Indices Supporting Data

MONTH	BUCKET 1 CPR	BUCKET 2 CPR	BUCKET 3 CPR	BUCKET 4 CPR	BUCKET 5 CPR	BUCKET 6 CPR
Jan-15	12.62%	8.53%	8.31%	7.41%	6.86%	7.88%
Feb-15	13.48%	8.66%	8.01%	7.39%	7.25%	7.51%
Mar-15	12.41%	8.96%	8.08%	7.35%	6.58%	7.23%
Apr-15	12.52%	10.28%	7.85%	8.24%	6.83%	7.07%
May-15	12.75%	10.04%	7.97%	7.88%	7.06%	7.01%
Jun-15	11.90%	10.18%	8.09%	6.30%	7.44%	7.12%
Jul-15	11.63%	10.20%	8.09%	5.60%	7.39%	6.92%
Aug-15	10.38%	10.91%	8.20%	5.95%	7.74%	7.35%
Sep-15	10.53%	11.19%	7.99%	5.99%	8.23%	7.68%
Oct-15	9.81%	9.64%	8.27%	5.90%	8.21%	7.89%
Nov-15	10.43%	9.66%	8.20%	7.53%	8.04%	7.98%
Dec-15	10.73%	9.39%	8.03%	9.60%	8.55%	8.11%
Jan-16	11.06%	9.07%	8.17%	9.70%	8.71%	8.01%
Feb-16	14.66%	9.40%	7.85%	9.79%	8.09%	7.68%
Mar-16	14.76%	9.03%	7.56%	9.83%	7.51%	7.43%
Apr-16	15.59%	9.41%	7.65%	9.51%	7.62%	7.43%
May-16	16.15%	9.05%	7.69%	6.97%	7.06%	7.43%
Jun-16	15.05%	10.24%	7.69%	4.59%	7.31%	7.57%
Jul-16	16.26%	10.65%	7.87%	3.92%	7.28%	7.80%
Aug-16	13.72%	10.56%	7.99%	3.28%	6.96%	7.97%
Sep-16	14.59%	11.12%	8.40%	4.50%	7.68%	8.38%
Oct-16	15.61%	10.93%	7.96%	4.24%	7.06%	8.44%
Nov-16	13.80%	11.98%	7.55%	5.06%	6.81%	8.28%
Dec-16	13.85%	11.32%	7.47%	5.89%	6.73%	7.97%
Jan-17	11.79%	11.64%	7.07%	4.73%	8.02%	8.28%
Feb-17	11.41%	11.05%	7.09%	5.43%	9.00%	8.14%
Mar-17	11.55%	10.72%	6.82%	5.75%	8.24%	7.76%
Apr-17	13.00%	11.24%	7.30%	8.12%	9.14%	7.93%
May-17	13.40%	9.89%	7.73%	10.36%	9.25%	8.14%
Jun-17	15.02%	10.52%	8.10%	10.46%	8.60%	8.44%
Jul-17	15.15%	10.30%	8.49%	11.02%	7.27%	8.10%
Aug-17	14.05%	10.77%	9.04%	11.75%	7.17%	8.16%
Sep-17	13.96%	11.79%	9.41%	10.67%	8.02%	8.24%
Oct-17	11.54%	11.82%	10.04%	13.18%	8.78%	9.29%
Nov-17	12.55%	12.30%	10.77%	13.03%	9.67%	10.37%
Dec-17	12.40%	12.09%	11.32%	13.12%	10.62%	11.29%
Jan-18	14.40%	11.79%	11.80%	14.09%	12.22%	12.33%
Feb-18	15.11%	12.25%	12.32%	13.68%	12.53%	13.49%
Mar-18	16.76%	11.79%	12.71%	13.85%	13.57%	14.21%
Apr-18	17.30%	11.49%	12.93%	11.29%	13.33%	14.41%
May-18	18.31%	11.36%	13.00%	12.67%	13.05%	14.34%
Jun-18	18.76%	15.54%	12.43%	14.64%	14.14%	14.69%

GLS Value Indices Supporting Data

MONTH	WAVG LIBOR	WAVG BASE	BASE LIBOR SPD	GLS VI-1	GLS VI-2	GLS VI-3	GLS VI-4	GLS VI-5	GLS VI-6
Jan-15	0.25%	3.25%	3.00%	84	60	56	139	150	162
Feb-15	0.26%	3.25%	2.99%	69	44	45	132	141	160
Mar-15	0.27%	3.25%	2.98%	62	37	43	129	145	155
Apr-15	0.27%	3.25%	2.98%	60	17	41	115	136	152
May-15	0.28%	3.25%	2.97%	55	22	42	121	127	153
Jun-15	0.28%	3.25%	2.97%	72	52	71	144	136	165
Jul-15	0.29%	3.25%	2.96%	88	68	84	160	147	173
Aug-15	0.32%	3.25%	2.93%	115	88	107	172	135	165
Sep-15	0.33%	3.25%	2.92%	141	118	138	188	143	172
Oct-15	0.32%	3.25%	2.93%	116	104	111	181	140	171
Nov-15	0.36%	3.25%	2.89%	118	93	95	153	134	161
Dec-15	0.53%	3.25%	2.72%	111	97	98	139	153	177
Jan-16	0.62%	3.50%	2.88%	104	78	77	130	138	169
Feb-16	0.62%	3.50%	2.88%	51	53	59	113	138	168
Mar-16	0.64%	3.50%	2.86%	44	51	55	111	134	162
Apr-16	0.63%	3.50%	2.87%	42	51	57	113	132	162
May-16	0.63%	3.50%	2.87%	42	58	59	143	139	161
Jun-16	0.66%	3.50%	2.84%	68	67	78	179	154	177
Jul-16	0.69%	3.50%	2.81%	51	56	70	181	142	164
Aug-16	0.80%	3.50%	2.70%	71	58	66	176	131	148
Sep-16	0.86%	3.50%	2.64%	51	72	80	149	128	135
Oct-16	0.88%	3.50%	2.62%	26	53	59	142	130	125
Nov-16	0.91%	3.50%	2.59%	46	47	63	139	134	126
Dec-16	0.97%	3.75%	2.78%	101	101	109	179	169	160
Jan-17	1.02%	3.75%	2.73%	53	68	85	173	139	148
Feb-17	1.04%	3.75%	2.71%	42	37	54	147	115	136
Mar-17	1.15%	3.75%	2.60%	68	57	43	124	109	128
Apr-17	1.16%	4.00%	2.84%	65	56	42	115	124	143
May-17	1.18%	4.00%	2.82%	68	90	60	83	119	136
Jun-17	1.27%	4.25%	2.98%	62	93	73	112	142	144
Jul-17	1.30%	4.25%	2.95%	41	85	62	93	147	141
Aug-17	1.31%	4.25%	2.94%	96	117	57	84	154	136
Sep-17	1.32%	4.25%	2.93%	88	127	81	95	147	136
Oct-17	1.35%	4.25%	2.90%	103	125	69	101	133	115
Nov-17	1.42%	4.25%	2.83%	100	120	67	101	118	92
Dec-17	1.61%	4.50%	2.89%	116	139	73	111	127	92
Jan-18	1.73%	4.50%	2.77%	83	123	47	60	79	58
Feb-18	1.87%	4.50%	2.63%	47	92	26	64	75	23
Mar-18	2.18%	4.50%	2.32%	-12	52	-3	31	34	-12
Apr-18	2.35%	4.75%	2.40%	-11	54	-5	55	40	-12
May-18	2.32%	4.75%	2.43%	-7	33	13	63	48	-5
Jun-18	2.33%	4.75%	2.42%	23	58	53	72	71	14

INDICES LEGEND	
	HIGHEST READING
	LOWEST READING

7(a) YTD Prepayment Speeds

Age Buckets

Actual prepayments versus actual pool trading balances

ACT CPR < 8	0-12 Mos.	13-24 Mos.	25-36 Mos.	37-48 Mos.	48+ Mos.
Oct-17	5.74%	11.28%	21.20%	13.04%	24.10%
Nov-17	3.76%	12.69%	36.19%	27.53%	17.14%
Dec-17	11.90%	20.94%	7.69%	13.43%	21.60%
Jan-18	10.94%	12.22%	30.05%	46.74%	27.37%
Feb-18	0.54%	15.61%	29.98%	6.07%	21.16%
Mar-18	29.06%	17.33%	13.24%	9.55%	25.02%
Apr-18	3.51%	19.56%	21.23%	6.04%	37.01%
May-18	4.98%	30.71%	21.95%	25.15%	35.22%
Jun-18	34.02%	20.48%	6.21%	18.03%	26.46%
Grand Total	11.64%	18.52%	21.94%	20.08%	26.27%

ACT CPR 10-13	0-12 Mos.	13-24 Mos.	25-36 Mos.	37-48 Mos.	48+ Mos.
Oct-17	3.81%	13.49%	18.71%	16.69%	24.25%
Nov-17	4.44%	10.01%	16.68%	16.58%	29.54%
Dec-17	4.65%	9.64%	12.49%	16.30%	25.17%
Jan-18	3.22%	11.10%	16.84%	16.25%	24.25%
Feb-18	3.99%	8.73%	19.19%	20.71%	25.85%
Mar-18	4.11%	8.76%	14.10%	19.72%	20.70%
Apr-18	5.50%	14.44%	14.28%	19.46%	24.68%
May-18	4.84%	12.05%	18.24%	18.25%	22.96%
Jun-18	9.57%	15.83%	21.75%	18.01%	23.94%
Grand Total	4.87%	11.61%	17.00%	18.03%	24.63%

ACT CPR 16-20	0-12 Mos.	13-24 Mos.	25-36 Mos.	37-48 Mos.	48+ Mos.
Oct-17	0.00%	11.01%	3.97%	24.76%	18.39%
Nov-17	13.39%	10.04%	12.06%	14.65%	17.43%
Dec-17	0.00%	14.07%	8.95%	21.65%	13.70%
Jan-18	0.00%	10.48%	13.85%	26.68%	21.69%
Feb-18	8.53%	5.12%	2.34%	20.18%	11.70%
Mar-18	4.50%	18.18%	15.83%	11.69%	16.59%
Apr-18	6.58%	11.33%	7.83%	5.91%	13.19%
May-18	7.75%	0.00%	22.01%	20.78%	11.19%
Jun-18	0.00%	14.01%	25.14%	26.28%	17.78%
Grand Total	4.72%	10.87%	12.54%	19.16%	15.84%

7(a) YTD Prepayment Speeds

Age Buckets

Actual prepayments versus actual pool trading balances

ACT CPR 8-10	0-12 Mos.	13-24 Mos.	25-36 Mos.	37-48 Mos.	48+ Mos.
Oct-17	11.25%	10.93%	12.49%	13.05%	11.82%
Nov-17	11.23%	7.30%	9.21%	9.57%	15.60%
Dec-17	5.31%	12.62%	19.05%	17.09%	21.62%
Jan-18	2.50%	5.97%	26.75%	8.41%	21.25%
Feb-18	3.05%	32.41%	28.63%	27.12%	23.45%
Mar-18	1.54%	32.61%	13.83%	11.71%	26.39%
Apr-18	9.44%	9.86%	20.30%	16.68%	35.06%
May-18	2.59%	20.92%	9.83%	26.07%	28.48%
Jun-18	17.14%	6.66%	22.75%	32.59%	21.33%
Grand Total	7.28%	15.77%	18.13%	17.78%	22.96%

ACT CPR 13-16	0-12 Mos.	13-24 Mos.	25-36 Mos.	37-48 Mos.	48+ Mos.
Oct-17	12.66%	22.79%	0.00%	40.89%	39.61%
Nov-17	0.00%	5.34%	0.00%	17.85%	22.66%
Dec-17	0.00%	0.00%	31.09%	24.62%	9.60%
Jan-18	0.00%	34.66%	1.01%	0.00%	11.18%
Feb-18	2.15%	0.00%	9.96%	3.91%	19.13%
Mar-18	2.89%	1.21%	0.00%	23.27%	5.94%
Apr-18	0.89%	0.95%	0.00%	5.05%	43.38%
May-18	23.80%	14.13%	19.81%	46.50%	23.72%
Jun-18	0.70%	20.97%	9.26%	40.40%	54.11%
Grand Total	5.20%	11.47%	9.62%	22.05%	27.37%

7(a) YTD Prepayment Speeds

Age Buckets

Actual prepayments versus actual pool trading balances

ACT CPR 20+	0-12 Mos.	13-24 Mos.	25-36 Mos.	37-48 Mos.	48+ Mos.
Oct-17	3.18%	9.87%	16.47%	27.10%	20.22%
Nov-17	2.96%	12.25%	17.10%	22.16%	20.67%
Dec-17	3.60%	11.41%	16.28%	24.51%	17.46%
Jan-18	3.27%	8.03%	19.15%	29.79%	18.03%
Feb-18	2.57%	8.66%	17.20%	23.19%	20.83%
Mar-18	3.03%	7.22%	16.80%	22.87%	14.53%
Apr-18	3.32%	8.33%	16.14%	28.99%	22.81%
May-18	3.50%	7.07%	19.25%	25.40%	19.71%
Jun-18	2.96%	10.39%	23.41%	27.65%	24.05%
Grand Total	3.15%	9.26%	18.03%	25.75%	19.85%

ACT CPR FIX	0-12 Mos.	13-24 Mos.	25-36 Mos.	37-48 Mos.	48+ Mos.
Oct-17	1.18%	11.91%	0.00%	0.00%	0.64%
Nov-17	0.00%	0.21%	0.00%	0.00%	3.13%
Dec-17	0.00%	1.10%	0.00%	0.00%	43.16%
Jan-18	6.70%	10.63%	52.20%	45.87%	50.92%
Feb-18	58.08%	9.64%	7.30%	0.00%	0.00%
Mar-18	0.00%	1.20%	0.00%	64.08%	7.23%
Apr-18	1.34%	10.72%	14.52%	0.00%	18.81%
May-18	0.00%	0.00%	0.00%	0.00%	38.71%
Jun-18	0.00%	3.94%	23.36%	0.00%	18.59%
Grand Total	9.27%	5.49%	13.17%	14.52%	22.37%

7(a) YTD Prepayment Speeds

Age Buckets

Corrected prepayments versus corrected pool trading balances

COR CPR < 8	0-12 Mos.	13-24 Mos.	25-36 Mos.	37-48 Mos.	48+ Mos.
Oct-17	5.75%	10.77%	19.36%	8.40%	12.48%
Nov-17	3.76%	12.61%	33.59%	19.50%	8.58%
Dec-17	11.96%	21.36%	6.76%	9.50%	10.19%
Jan-18	11.04%	12.23%	27.66%	34.46%	9.83%
Feb-18	0.54%	15.48%	26.15%	4.69%	8.62%
Mar-18	29.27%	17.13%	11.70%	7.06%	14.34%
Apr-18	3.56%	19.50%	19.84%	4.53%	23.59%
May-18	4.96%	30.90%	18.73%	21.07%	13.73%
Jun-18	34.40%	20.93%	5.85%	14.47%	12.64%
Grand Total	11.73%	18.56%	19.81%	14.60%	12.82%

COR CPR 10-13	0-12 Mos.	13-24 Mos.	25-36 Mos.	37-48 Mos.	48+ Mos.
Oct-17	3.79%	13.25%	17.60%	14.68%	12.98%
Nov-17	4.43%	9.82%	15.83%	14.69%	16.65%
Dec-17	4.65%	9.48%	11.90%	14.48%	12.81%
Jan-18	3.21%	10.91%	15.94%	14.52%	13.24%
Feb-18	3.98%	8.58%	18.22%	18.45%	14.41%
Mar-18	4.10%	8.61%	13.35%	17.75%	10.93%
Apr-18	5.48%	14.28%	13.60%	17.29%	12.53%
May-18	4.84%	11.90%	17.42%	16.56%	11.72%
Jun-18	9.58%	15.61%	20.88%	16.22%	13.79%
Grand Total	4.86%	11.44%	16.16%	16.11%	13.23%

COR CPR 16-20	0-12 Mos.	13-24 Mos.	25-36 Mos.	37-48 Mos.	48+ Mos.
Oct-17	0.00%	11.00%	3.98%	24.38%	13.98%
Nov-17	13.50%	10.02%	11.91%	13.65%	12.53%
Dec-17	0.00%	14.12%	8.76%	21.18%	9.82%
Jan-18	0.00%	10.57%	13.78%	26.10%	14.14%
Feb-18	8.65%	5.24%	2.34%	19.19%	8.61%
Mar-18	4.50%	18.57%	15.85%	11.39%	11.17%
Apr-18	6.61%	11.48%	7.83%	5.84%	11.04%
May-18	7.75%	0.00%	22.04%	20.79%	7.32%
Jun-18	0.00%	14.26%	25.16%	26.66%	12.69%
Grand Total	4.76%	10.99%	12.51%	18.82%	11.30%

7(a) YTD Prepayment Speeds

Age Buckets

Corrected prepayments versus corrected pool trading balances

COR CPR 8-10	0-12 Mos.	13-24 Mos.	25-36 Mos.	37-48 Mos.	48+ Mos.
Oct-17	11.27%	10.71%	11.52%	10.26%	5.53%
Nov-17	11.18%	7.00%	8.60%	7.20%	8.13%
Dec-17	5.34%	12.55%	17.99%	13.74%	11.64%
Jan-18	2.52%	5.87%	24.06%	7.95%	11.35%
Feb-18	3.05%	31.70%	27.04%	21.91%	15.44%
Mar-18	1.54%	31.98%	12.88%	9.80%	13.02%
Apr-18	9.44%	9.73%	19.18%	12.34%	22.28%
May-18	2.59%	21.05%	8.73%	21.65%	21.82%
Jun-18	17.14%	6.63%	20.83%	27.97%	14.11%
Grand Total	7.28%	15.51%	16.76%	14.53%	13.87%

COR CPR 13-16	0-12 Mos.	13-24 Mos.	25-36 Mos.	37-48 Mos.	48+ Mos.
Oct-17	12.73%	22.96%	0.00%	39.44%	22.76%
Nov-17	0.00%	5.23%	0.00%	17.96%	15.96%
Dec-17	0.00%	0.00%	30.08%	24.70%	8.76%
Jan-18	0.00%	35.36%	0.97%	0.00%	6.43%
Feb-18	2.15%	0.00%	9.98%	3.47%	11.61%
Mar-18	2.88%	1.26%	0.00%	23.23%	2.60%
Apr-18	0.90%	0.93%	0.00%	4.40%	37.77%
May-18	24.04%	14.49%	19.68%	42.19%	15.39%
Jun-18	0.72%	21.36%	9.33%	35.95%	45.74%
Grand Total	5.25%	11.67%	9.47%	20.85%	19.87%

7(a) YTD Prepayment Speeds

Age Buckets

Corrected prepayments versus corrected pool trading balances

COR CPR 20+	0-12 Mos.	13-24 Mos.	25-36 Mos.	37-48 Mos.	48+ Mos.
Oct-17	3.23%	9.99%	16.52%	25.80%	14.34%
Nov-17	2.99%	12.37%	17.17%	21.45%	15.36%
Dec-17	3.63%	11.53%	16.47%	23.66%	12.62%
Jan-18	3.30%	8.12%	19.35%	28.92%	13.67%
Feb-18	2.58%	8.82%	17.44%	22.80%	14.98%
Mar-18	3.11%	7.34%	17.13%	22.65%	10.86%
Apr-18	3.34%	8.44%	16.39%	29.06%	16.70%
May-18	3.52%	7.19%	19.56%	25.34%	15.39%
Jun-18	2.97%	10.56%	23.83%	26.65%	18.17%
Grand Total	3.19%	9.38%	18.26%	25.17%	14.70%

COR CPR FIXED	0-12 Mos.	13-24 Mos.	25-36 Mos.	37-48 Mos.	48+ Mos.
Oct-17	1.18%	11.91%	0.00%	0.00%	0.64%
Nov-17	0.00%	0.21%	0.00%	0.00%	3.13%
Dec-17	0.00%	1.10%	0.00%	0.00%	42.99%
Jan-18	6.70%	10.63%	52.23%	45.79%	50.44%
Feb-18	58.10%	9.64%	7.30%	0.00%	0.00%
Mar-18	0.00%	1.20%	0.00%	63.90%	7.12%
Apr-18	1.34%	10.72%	14.53%	0.00%	18.47%
May-18	0.00%	0.00%	0.00%	0.00%	38.03%
Jun-18	0.00%	3.94%	23.39%	0.00%	18.18%
Grand Total	9.27%	5.49%	13.18%	14.48%	22.12%

7(a) YTD Prepayment Speeds

Age Buckets

Corrected prepayments versus underlying loan trading balances

LOAN CPR < 8	0-12 Mos.	13-24 Mos.	25-36 Mos.	37-48 Mos.	48+ Mos.
Oct-17	5.72%	10.86%	21.55%	11.36%	23.32%
Nov-17	3.74%	12.70%	36.85%	25.74%	16.40%
Dec-17	11.88%	21.49%	7.58%	12.68%	19.20%
Jan-18	10.94%	12.33%	30.20%	43.10%	18.77%
Feb-18	0.53%	15.51%	28.55%	6.26%	16.76%
Mar-18	28.96%	17.15%	12.93%	9.34%	25.59%
Apr-18	3.51%	19.52%	21.72%	5.86%	40.75%
May-18	4.91%	30.84%	20.35%	26.01%	24.54%
Jun-18	34.19%	20.83%	6.18%	18.17%	22.91%
Grand Total	11.64%	18.60%	21.73%	18.97%	23.62%

LOAN CPR 10-13	0-12 Mos.	13-24 Mos.	25-36 Mos.	37-48 Mos.	48+ Mos.
Oct-17	3.80%	13.54%	18.68%	16.74%	22.75%
Nov-17	4.44%	10.00%	16.76%	16.68%	29.02%
Dec-17	4.65%	9.64%	12.59%	16.36%	22.74%
Jan-18	3.21%	11.07%	16.78%	16.31%	23.15%
Feb-18	3.97%	8.70%	19.14%	20.63%	24.96%
Mar-18	4.09%	8.74%	14.01%	19.84%	19.00%
Apr-18	5.48%	14.48%	14.25%	19.32%	21.41%
May-18	4.84%	12.06%	18.16%	18.40%	19.87%
Jun-18	9.56%	15.83%	21.76%	17.98%	23.02%
Grand Total	4.86%	11.62%	16.99%	18.07%	22.86%

LOAN CPR 16-20	0-12 Mos.	13-24 Mos.	25-36 Mos.	37-48 Mos.	48+ Mos.
Oct-17	0.00%	10.95%	3.98%	24.94%	20.91%
Nov-17	13.40%	9.98%	11.92%	13.99%	18.73%
Dec-17	0.00%	14.03%	8.78%	21.80%	14.73%
Jan-18	0.00%	10.48%	13.80%	26.74%	20.86%
Feb-18	8.60%	5.19%	2.33%	19.70%	12.92%
Mar-18	4.47%	18.41%	15.79%	11.67%	16.54%
Apr-18	6.56%	11.37%	7.82%	5.96%	16.38%
May-18	7.70%	0.00%	22.05%	21.13%	11.02%
Jun-18	0.00%	14.08%	25.21%	27.06%	18.89%
Grand Total	4.73%	10.90%	12.50%	19.24%	16.86%

7(a) YTD Prepayment Speeds

Age Buckets

Corrected prepayments versus underlying loan trading balances

LOAN CPR 8-10	0-12 Mos.	13-24 Mos.	25-36 Mos.	37-48 Mos.	48+ Mos.
Oct-17	11.26%	11.04%	13.10%	12.90%	8.42%
Nov-17	11.16%	7.18%	9.49%	9.16%	12.30%
Dec-17	5.33%	12.89%	19.61%	16.95%	17.24%
Jan-18	2.51%	6.01%	26.15%	9.85%	16.91%
Feb-18	3.05%	32.38%	29.30%	26.69%	22.59%
Mar-18	1.53%	32.51%	13.84%	12.26%	19.17%
Apr-18	9.40%	9.90%	20.66%	15.42%	31.86%
May-18	2.58%	21.26%	9.39%	26.58%	31.50%
Jun-18	17.01%	6.71%	22.16%	33.61%	20.95%
Grand Total	7.25%	15.83%	18.22%	18.01%	20.48%

LOAN CPR 13-16	0-12 Mos.	13-24 Mos.	25-36 Mos.	37-48 Mos.	48+ Mos.
Oct-17	12.61%	22.70%	0.00%	40.27%	32.50%
Nov-17	0.00%	5.16%	0.00%	18.42%	23.47%
Dec-17	0.00%	0.00%	31.91%	25.31%	13.19%
Jan-18	0.00%	34.84%	1.02%	0.00%	9.63%
Feb-18	2.13%	0.00%	9.97%	3.70%	16.91%
Mar-18	2.86%	1.24%	0.00%	24.70%	3.84%
Apr-18	0.90%	0.91%	0.00%	4.73%	50.78%
May-18	23.91%	14.15%	19.65%	46.05%	21.09%
Jun-18	0.71%	20.90%	9.33%	39.35%	58.00%
Grand Total	5.21%	11.46%	9.73%	21.96%	28.15%

7(a) YTD Prepayment Speeds

Age Buckets

Corrected prepayments versus underlying loan trading balances

LOAN CPR 20+	0-12 Mos.	13-24 Mos.	25-36 Mos.	37-48 Mos.	48+ Mos.
Oct-17	3.20%	9.84%	16.45%	26.87%	20.32%
Nov-17	2.97%	12.19%	17.08%	22.25%	21.71%
Dec-17	3.60%	11.37%	16.37%	24.46%	17.92%
Jan-18	3.28%	8.00%	19.19%	29.71%	19.29%
Feb-18	2.56%	8.69%	17.24%	23.32%	21.08%
Mar-18	3.08%	7.23%	16.86%	23.08%	15.41%
Apr-18	3.32%	8.32%	16.09%	29.37%	23.37%
May-18	3.50%	7.09%	19.22%	25.47%	21.56%
Jun-18	2.96%	10.41%	23.41%	26.70%	25.25%
Grand Total	3.16%	9.25%	18.05%	25.72%	20.71%

LOAN CPR FIX	0-12 Mos.	13-24 Mos.	25-36 Mos.	37-48 Mos.	48+ Mos.
Oct-17	1.17%	11.82%	0.00%	0.00%	0.79%
Nov-17	0.00%	0.21%	0.00%	0.00%	3.86%
Dec-17	0.00%	1.09%	0.00%	0.00%	50.31%
Jan-18	6.66%	10.57%	51.81%	47.36%	58.66%
Feb-18	57.82%	9.57%	7.21%	0.00%	0.00%
Mar-18	0.00%	1.19%	0.00%	64.99%	8.93%
Apr-18	1.33%	10.64%	14.36%	0.00%	22.81%
May-18	0.00%	0.00%	0.00%	0.00%	45.71%
Jun-18	0.00%	3.91%	23.13%	0.00%	22.76%
Grand Total	9.21%	5.45%	13.03%	14.88%	27.02%

GLOSSARY AND DEFINITIONS: PAGE 1

Default-Curtailment Ratio

The Default-Curtailment Ratio (DCR), or the percentage of secondary loan curtailments that are attributable to defaults, can be considered a measurement of the health of small business in the U.S. GLS, with default and borrower prepayment data supplied by Colson Services, has calculated DCRs for both SBA 7(a) and 504 loans since January, 2000.

The default ratio is calculated using the following formula:

$$\text{Defaults} / (\text{Defaults} + \text{Prepayments})$$

By definition, when the DCR is increasing, defaults are increasing faster than borrower prepayments, suggesting a difficult business environment for small business, perhaps even recessionary conditions. On the flip side, when the DCR is decreasing, either defaults are falling or borrower prepayments are outpacing defaults, each suggesting improving business conditions for small business.

Our research suggests that a reading of 20% or greater on 7(a) DCRs and 15% or greater on 504 DCRs suggest economic weakness in these small business borrower groups.

Theoretical Default Rate

Due to a lack of up-to-date default data, we attempt to estimate the current default rate utilizing two datasets that we track:

Total prepayment data on all SBA pools going back to 2003. This is the basis for our monthly prepayment information.

Total prepayment data on all secondary market 7(a) loans going back to 1999, broken down by defaults and voluntary prepayments. This is the basis for our monthly default ratio analysis.

With these two datasets, it is possible to derive a theoretical default rate on SBA 7(a) loans. We say “theoretical” because the reader has to accept the following assumptions as true:

The ratio of defaults to total prepayments is approximately the same for SBA 7(a) pools and secondary market 7(a) loans.

Fact: 60% to 70% of all secondary market 7(a) loans are inside SBA pools.

The default rate for secondary market 7(a) loans closely approximates the default rate for all outstanding 7(a) loans.

Fact: 25% to 35% of all outstanding 7(a) loans have been sold into the secondary market.

While the above assumptions seem valid, there exists some unknown margin for error in the resulting analysis. However, that does not invalidate the potential value of the information to the SBA lender community.

The Process

To begin, we calculated total SBA pool prepayments, as a percentage of total secondary loan prepayments, using the following formula:

$$\text{Pool Prepay Percentage} = \text{Pool Prepayments} / \text{Secondary Loan Prepayments}$$

This tells us the percentage of prepayments that are coming from loans that have been pooled. Next, we calculated the theoretical default rate using the following equation:

$$((\text{Secondary Loan Defaults} * \text{Pool Prepay Percentage}) / \text{Pool Opening Balance}) * 12$$

This provides us with the theoretical default rate for SBA 7(a) loans, expressed as an annualized percentage.

GLS Long Value Indices

Utilizing the same maturity buckets as in our CPR analysis, we calculate 6 separate indexes, denoted as GLS VI-1 to VI-6. The numbers equate to our maturity buckets in increasing order, with VI-1 as <8 years, VI-2 as 8-10 years, VI-3 as 10-13 years, VI-4 as 13-16 years, VI-5 as 16-20 years and ending with VI-6 as 20+ years.

The new Indices are basically weighted-average spreads to Libor, using the rolling six-month CPR for pools in the same maturity bucket, at the time of the transaction. While lifetime prepayment speeds would likely be lower for new loans entering the secondary market, utilizing six-month rolling pool speeds allowed us to make relative value judgments across different time periods.

We compare the bond-equivalent yields to the relevant Libor rate at the time of the transaction. We then break the transactions into the six different maturity buckets and calculate the average Libor spread, weighting them by the loan size.

For these indices, the value can be viewed as the average spread to Libor, with a higher number equating to greater value in the trading levels of SBA 7(a) loans.

GLOSSARY AND DEFINITIONS: PAGE 2

Prepayment Calculations

SBA Pool prepayment speeds are calculated using the industry convention of Conditional Prepayment Rate, or CPR. CPR is the annualized percentage of the outstanding balance of a pool that is expected to prepay in a given period. For example, a 10% CPR suggests that 10% of the current balance of a pool will prepay each year.

When reporting prepayment data, we break it into seven different original maturity categories: <8 years, 8-10 years, 10-13 years, 13-16 years, 16-20 years and 20+ years. Within these categories we provide monthly CPR and YTD values.

In order to get a sense as to timing of prepayments during a pool's life, we provide CPR for maturity categories broken down by five different age categories: 0-12 months, 13-24 months, 25-36 months, 37-48 months and 48+ months.

As to the causes of prepayments, we provide a graph which shows prepayment speeds broken down by voluntary borrower prepayment speeds, denoted VCPR and default prepayment speeds, denoted as DCPR. The formula for Total CPR is as follows:

$$\text{Total Pool CPR} = \text{VCPR} + \text{DCPR}$$

SBA Libor Base Rate

The SBA Libor Base Rate is set on the first business day of the month utilizing one-month LIBOR, as published in a national financial newspaper or website, plus 3% (300 basis points). The rate will be rounded to two digits with .004 being rounded down and .005 being rounded up. Please note that the SBA's maximum 7(a) interest rates continue to apply to SBA base rates: Lenders may charge up to 2.25% above the base rate for maturities under seven years and up to 2.75% above the base rate for maturities of seven years or more, with rates 2% higher for loans of \$25,000 or less and 1% higher for loans between \$25,000 and \$50,000. (Allowable interest rates are slightly higher for SBAExpress loans.)

Risk Types

The various risk types that impact SBA pools are the following:

Basis Risk: The risk of unexpected movements between two indices. The impact of this type of risk was shown in the decrease in the Prime/Libor spread experienced in 2007 and 2008.

Prepayment Risk: The risk of principal prepayments due to borrower voluntary curtailments and defaults. Overall prepayments are expressed in CPR, or Conditional Prepayment Rate.

Interest Rate Risk: The risk of changes in the value of an interest-bearing asset due to movements in interest rates. For pools with monthly or quarterly adjustments, this risk is low.

Credit Risk: Losses experienced due to the default of collateral underlying a security. Since SBA loans and pools are guaranteed by the US government, this risk is very small.

Secondary Market First Lien Position 504 Loan Pool Guarantee Program

As part of the American Recovery and Reinvestment Act (AKA the Stimulus Bill), Congress authorized the SBA to create a temporary program that provides a guarantee on an eligible pool of SBA 504 first liens. The program was authorized for a period of two years from the date of bill passage – February, 2009. The eligibility of each loan is dependent on the date of the SBA Debenture funding. To be eligible, the Debenture must have been funded on or after February 17, 2009. The total guarantee allocation is \$3 Billion. HR 5297 provides for a two-year extension from the first pooling month, so that the final end date of the program was September, 2012.

The SBA began issuing pool guarantees in September, 2010 for early October settlement.

For the purposes of the program, a pool is defined as 2 or more loans. A pool must be either fixed (for life) or adjustable (any period adjustment including 5 or 10 years). If the pool is comprised of adjustable rate loans, all loans must have the same base rate (e.g. Prime, LIBOR, LIBOR Swaps, FHLB, etc.). Finally, each loan must be current for the lesser of 6 months or from the time of loan funding. Congress mandated that this be a zero subsidy program to the SBA (and the US taxpayer). The SBA has determined the program cost (management and expected losses) can be covered by an ongoing subsidy fee of .744% for fiscal year 2012.

GLOSSARY AND DEFINITIONS: PAGE 3

SBA 504 Program and Debenture Funding

To support small businesses and to strengthen the economy Congress created the U.S. Small Business Administration (SBA) in 1953 to provide a range of services to small businesses including financing. In 1958 Congress passed the Small Business Investment Act which established what is known today as the SBA 504 loan program.

The 504 loan program provides financing for major fixed assets, such as owner-occupied real estate and long-term machinery and equipment. A 504 project is funded by a loan from a bank secured with a first lien typically covering 50% of the project's cost, a loan from a CDC secured with a second lien (backed by a 100% SBA-guaranteed debenture) covering a maximum of 40% of the cost, and a contribution of at least 10% of the project cost from the small business being financed. The SBA promotes the 504 program as an economic development tool because it is a small-business financing product that generates jobs.

Each debenture is packaged with other CDC debentures into a national pool and is sold on a monthly basis to underwriters. Investors purchase interests in debenture pools and receive certificates representing ownership of all or part of a debenture pool. SBA uses various agents to facilitate the sale and service of the certificates and the orderly flow of funds among the parties involved. The debenture sales are broken into monthly sales of 20 year debentures and bi-monthly sales of 10 year debentures.

It is the performance of these debenture pools that we track in the CPR Report on a monthly basis.

SBI Pool and IO Strip Indexes

Through a joint venture called Small Business Indexes, Inc. or SBI, GLS and Ryan ALM introduced a group of total return indexes for SBA 7a pools and I/O strips with history going back to 1/1/2000.

Why did we do this?

Indexes have been around since 1896 when the Dow Jones Industrial Average was introduced. They have grown in importance to the financial markets, whereby today \$6 trillion are invested in Index Funds throughout the world.

The reasons for having investment indexes are fivefold:

1. **Asset Allocation Models:** Asset Allocation usually accounts for over 90% of a client's total return and becomes the most critical asset decision. Such models use 100% index data to calculate their asset allocations. Bond index funds are the best representation of the intended risk/reward of fixed income asset classes.
2. **Transparency:** Most bond index benchmarks publish daily returns unlike active managers who publish monthly or even quarterly returns usually with a few days of delinquency. Such transparency should provide clients with more information on the risk/reward behavior of their assets so there are no surprises at quarterly asset management review meetings.
3. **Performance Measurement:** Creates a benchmark for professional money managers to track their relative performance.
4. **Dictates Risk/Reward Behavior:** By analyzing historical returns of an index, an investor can better understand how an asset class will perform over long periods of time, as well as during certain economic cycles.
5. **Hedging:** An investment index can provide a means for hedging the risk of a portfolio that is comprised of assets tracked by the index. An example would be hedging a 7a servicing portfolio using the SBI I/O Strip Index.

By creating investment indexes for SBA 7a pool and IO strips, these investments can become a recognized asset class by pension funds and other large investors who won't consider any asset class in their asset allocation models that does not have a benchmark index.

An additional use for the I/O index could be to allow 7a lenders to hedge servicing portfolios that are getting large due to production and the low prepayment environment. This increase in exposure to 7a IO Strips would be welcome by IO investors who are constrained by the amount of loans that are stripped prior to being pooled.

Continued on the following page.

GLOSSARY AND DEFINITIONS: PAGE 4

SBI Pool and IO Strip Indexes (continued)

How are the indexes calculated?

The rules for choosing which outstanding pools are eligible for both the pool and IO indexes are the following:

Pool Size:

- \$5 million minimum through 1/1/2005.
- \$10 million minimum after 1/1/2005.

Pool Structure:

- Minimum of 5 loans inside the pool.
- Minimum average loan size of \$250,000.

Pool Maturity:

- Minimum of 10 years of original maturity.
- Sub indices for 10-15 years and 15-25 year maturities.
- The rules for remaining in the indices are the following:

Pool Size:

- Minimum pool factor of .25
- Factor Updates in the Indices are on the first of the month, based on the Colson Factor Report that is released in the middle of the previous month.

Pool Structure:

- Minimum of 5 loans inside the pool.

We have produced two weightings for each pool in the various indexes, "Actual" and "Equal":

"Actual" weighted Indices:

- The actual original balance of each pool is used to weight the pool in the index.
- An index for all eligible pools, as well as one for 10-15 years and one for 15-25 years of original maturity.
- A total of 3 actual weighted sub-indices.

"Equal" weighted Indices:

- An original balance of \$10 million is assigned to each pool, regardless of its true size.
- An index for all eligible pools, as well as one for 10-15 years and one for 15-25 years of original maturity.
- A total of 3 equal weighted sub-indices.

Continued on the following page.

GLOSSARY AND DEFINITIONS: PAGE 5

SBI Pool and IO Strip Indexes (continued)

This equates to a total of (6) Pool sub-indices. We will refer to them on a go-forward basis as the following:

Actual Weighting:

- All 10-25 year in original maturity pools “All Actual”
- 10-15 year in original maturity pools “Short Actual”
- 15-25 year in original maturity pools “Long Actual”

Equal Weighting:

- All 10-25 year in original maturity pools “All Equal”
- 10-15 year in original maturity pools “Short Equal”
- 15-25 year in original maturity pools “Long Equal”

Return Calculations

Each index is tracked by its value on a daily basis, as well as the components of return.

Income Component

- Daily return is calculated for the contribution of interest earned.

Mark-to-Market Component

- Daily return is calculated for the contribution of Mark-To-Market changes.

Scheduled Principal Component

- Daily return is calculated for the contribution of normal principal payments. Only impacts the first of the month.

Prepaid Principal Component

- Daily return is calculated for the contribution of prepaid principal payments. Only impacts the first of the month.
- We have also added a Default Principal Component and a Voluntary Principal Component that, together, equate to the Prepaid Principal Component. This also only impacts the first of the month.

Total Principal Component

- Daily return is calculated for the contribution of all principal payments. Only impacts the first of the month.

The formula for Total Daily Return is as follows:

$$\text{Total Daily Return} = \text{Income Return} + \text{MTM Return} + \text{Principal Return}$$

The Principal Return is generated using the following formula:

$$\text{Principal Return} = \text{Prepaid Principal Return} + \text{Scheduled Principal Return}$$

Continued on the following page.

GLOSSARY AND DEFINITIONS: PAGE 6

SBI Pool and IO Strip Indexes (continued)

The I/O Strip Indexes are a bit more involved, since we have to calculate the pricing multiple, as well as the breakdown between income earned and return of capital from interest accruals and payments. Here are the specific rules for the I/O Strip Indexes:

- The I/O Strip Indices utilize the same pools as the Pool Indices.
- Each pool is synthetically “stripped” upon entering the I/O Indices.
- For the equal and actual weighted indices and the maturity sub-indices (10-15 and 15-25), the pools are split into two even buckets utilizing the pool reset margins. The bucket with the higher margins we refer to as the “Upper Bucket” and the lower margin pools are in the “Lower Bucket”.
- The weighted average reset margin and pool MTM is calculated for each bucket. The MTM is the same one utilized in the pool indices.
- The weighted average price of the Lower Bucket is subtracted from the Upper Bucket. The same thing is done for the weighted average reset margin.
- The MTM difference is divided by the reset margin difference, giving us the pricing multiple by maturity and weighting.
- The end result is a pricing multiple for equal and actual weighting for 10-15 year pools and 15-25 year pools, totaling (4) distinct multiples. For the Hedge Indexes, there is no pricing component.
- Not all interest received is considered earned income, therefore interest received by the stripped pools is divided into earnings and return of capital, utilizing OID accounting rules. This lowers the income portion return since a portion of each pool’s interest payment is considered return of principal. However, for our Hedge Indices, all interest is considered earnings with no return of capital.
- The OID accounting rule create a straight-line return of capital upon entry into the index and the difference between the return of capital and interest received is earned income.
- Fundamentally, high prepayments can push more received interest into return of capital, thus limiting earned income. Excellent prepayment performance can generate large amounts of earned income over time.

Once the return percentages are determined for each day, it is then applied to the previous day’s index level, in order to calculate the index levels for that day.

Supporting Calculations

To aid in the analysis of the indexes, we track (22) distinct calculations for each of the (6) sub-indices:

Size

- Pool count and total outstanding balance

Structure

- Weighted average issue date, maturity date, reset date, maturity months, remaining months, age, coupon, reset margin, strip percent (strip indexes only).

Price and Yield

- Weighted average pool price, bond-equivalent yield, strip discount rate, multiple and strip pricing (strip indexes only)

Other Calculations

- CPR assumption, weighted average life, modified duration, index duration, strip duration and strip return of capital average life.

Continued on the following page.

GLOSSARY AND DEFINITIONS: PAGE 7

SBI Pool and IO Strip Indexes (continued)

SBA 504 Debenture and SBIC Debenture Indexes

While the above calculations for both the SBA 504 Debenture (SBAP) and SBIC Debenture Indexes are the same, there are differences in structure and reporting between all three SBA Programs. Here are the differences:

- SBAP's have monthly factor updates for 20 year (deemed "Long") but bi-monthly updates for 10-year paper ("Short").
- SBAP's have one new 20-year maturity each month and one 10-year every other month.
- SBICs only have 10 year debentures and they update factors only twice a year, in March and September.
- SBICs have a new debenture issued in the same months as above.
- SBICs do not amortize, whereas both SBAPs and 7a Pools do. For this reason, there is no Scheduled Principal Sub-Index.
- While 7a pools are all floating rate securities in the indexes, SBAP and SBICs debentures are all fixed rate, thus having longer durations and greater sensitivity to interest rate movements.

SBA Composite Indexes

The SBI Composite Indexes combine the four primary indexes (7a Pools, 7a IO Strips, SBAPs and SBICs) into one suite of indexes. While the actual weighted indexes use the four primary actual indexes weighted by actual size, the equal weighted indexes use the four primary equal weighted indexes also weighted by actual size. Due to the fact that the three SBA programs have grown, and continue to grow, at different rates since 1999, a static equal weighting methodology would create balancing issues over time. Therefore, we thought it best to weight the equal indexes by the actual program sizes.

The Composite indexes have all of the same sub-indexes as the four primary indexes.

SBI Rich / Cheap Analysis

The SBI Rich /Cheap Analysis is an attempt to create a "fair value" pricing model, based on 13 years of historical index pricing. We then compare the fair value price to current market levels, as represented by the GLS pricing models. We do this for 10 to 15 year maturity index-eligible pools and for 15+ maturity ones, effectively creating two separate calculations.

The first step was to create a fair value pricing algorithm for each maturity bucket, which is based on the following historical inputs:

Fundamental Inputs:

- The rolling 12-month historical CPR for all pools, including non-eligible ones, inside each maturity bucket.
- The previous month's 1 month CPR for the same population and maturity bucket.
- We used all pools, since the GLS pricing models do not differentiate between eligible and non-eligible pools.
- Weighted average pool coupon.

We chose the prepayment inputs in order to provide a directional element for pool prepayments. For instance, when the 1 month CPR is lower than the 12 month one, then the trend for prepayments is lower and when it is higher, the trend is toward higher prepayments.

We added the coupon input to add market level interest rates to the analysis. Since we are only using floating-rate SBA 7a pools that reset monthly or quarterly, this input is a proxy for the base rate on the pricing date.

Continued on the following page.

GLOSSARY AND DEFINITIONS: PAGE 8

SBI Rich / Cheap Analysis (continued)

Structural Inputs:

- Weighted average pool net margin to the base rate.
- Weighted average remaining months to maturity.
- Weighted average pool age.

The structural inputs put the weighted average index price into context, based on the amount and number of interest payments into the future.

The algorithm will be re-calibrated on an annual basis with the addition of the previous year's pricing data and then applied to the next year's pricing data to calculate the fair value price.

Methodology

We used multiple regression for the analysis and achieved an r-squared of .80 for the 10-15 year maturity bucket and .95 for the 15+ maturity bucket.

We then subtracted the fair value price from the index pricing level to find the difference between these two pricing elements. Basically, when the index pricing level is higher than the fair value price, the index price is, to varying degrees, "rich" and when it is below the fair value price, it is "cheap".

Additionally, we determined that a "Fair Value Band" was necessary for the analysis. We decided that when the two pricing components are within $\pm .50$ of each other (green portion of the accompanying graph), the index pricing level was fairly valued as per the model.

When the index price rose above the fair value band, the market for SBA pools is considered "Rich", or expensive compared to historical pricing and when it is below the band, it is "Cheap" or inexpensive as compared to our fair value price.

SBIC Debenture Program

A Small Business Investment Company (SBIC) is a privately owned and operated company that makes long-term investments in American small businesses and is licensed by the United States Small Business Administration (SBA).

A principal reason for a company to become licensed as an SBIC is access to financing (Leverage) provided by SBA. In addition, banks and Federal savings associations (as well as their holding companies) have the ability to own or to invest in SBICs and thereby to own indirectly more than 5 percent of the voting stock of a small business,¹ and can receive Community Reinvestment Act credit for SBIC investments. Banks and their holding companies also receive exemptions from certain capital charge regulations and lending "affiliation" rules under the Gramm-Leach-Bliley Act. A business seeking a U.S. Government contract that is a set aside for small businesses does not lose its status as a small business by reason of a control investment by an SBIC. Many Business Development Companies (BDCs) also have formed SBIC "subsidiaries" as part of their business strategies.

The SBIC Program has undergone significant changes since its creation in 1958. The original Program permitted only Debenture Leverage. The Small Business Equity Enhancement Act of 1992 drastically changed the SBIC program. It created a new form of SBA Leverage known as "Participating Securities" (essentially preferred limited partnership interests); increased the amount of Leverage available to an SBIC to \$90 million (which subsequently was indexed to reflect changes in the cost of living since March 31, 1993 and then modified in 2009 to be \$150 million); required minimum private capital of \$10 million for SBICs using Participating Securities and \$5 million for SBICs using Debentures; provided for stricter SBA licensing standards; and enacted other changes to make the program more consistent with the private venture capital industry. Unlike the Debenture program which requires periodic interest payments, the Participating Securities program required an SBIC to pay SBA a prioritized payment (preferred return) and a profit share when the SBIC realized profits. As a consequence, the Participating Securities program was designed to permit investing in equity securities whether or not those securities had a current pay component.

GLOSSARY AND DEFINITIONS: PAGE 9

SBIC Debenture Program (continued)

This new program resulted in a large expansion of the number of SBIC licenses granted. Following the burst of the “technology bubble” in 2002, the Administration decided there was no longer a need for an equity SBIC program and determined that the existing participating securities program would result in significant losses to SBA. Accordingly, SBA terminated the program, and that beginning on October 1, 2004, stopped issuing commitments to use participating securities leverage and licensing new participating securities SBICs.

SBA currently provides financing (called “Leverage”) to SBICs in the form of “Debentures.” Debentures are unsecured ten-year loans issued by the SBIC that have interest-only payable semi-annually. Most Debentures bear a temporary interest rate based on LIBOR. The interest rate on these Debentures is fixed when the SBA pools Debentures from various SBICs and sells them to the public, with the pooled Debentures having a 10-year maturity from the sale date.

It is these debentures that are analyzed in the CPR Report.

Since SBIC Debentures do not have an amortization component, I have added a different CPR calculation inside the CPR Report.

I call it the “Amortization Equivalent CPR” (AECPR). Since the principal balance does not amortize for SBIC debentures, it makes it difficult to compare them, from a pre-payment perspective, to amortizing assets, such as SBA 7a and 504 debenture pools.

The AECPR assumes the asset amortizes and looks at the beginning and ending balance to calculate the CPR. The calculation uses the exact MBA (Mortgage Banker’s Association) standard formula for CPR.

Because of the amortization assumption, the AECPR is always lower than the normal CPR calculation for SBIC pools, and can go below zero if the principal reduction does not fully offset the assumed amortization amount.

SBA 7a League Tables

League tables track volumes of SBA 7a pools by pool assembler, maturity bucket and fixed rate structure during a given calendar year. For the Report, we show the two largest maturity buckets, 10-13 year and 20+ year pools, as well as all formed pools and fixed rate ones. As for how we credit originations for pools with multiple assemblers, we divide the pool amount equally between the pool assemblers involved in the origination.

Prepayment Calculation Explanations

After extensive analysis, including sourcing loan level data on a bi-monthly basis going back to 10/31/2017, we are now able to calculate the amount of excess principal paid out since last October with a high degree of accuracy.

With this data, we have calculated two other prepayment figures:

1. **ACPR:** A prepayment speed that includes paid excess from the Master Reserve Fund, which synthetically inflates CPRs for many pools issued between FY 2005 and FY 2017. This uses the exact amount of pool prepayments without any adjustments. The paid out excess also inflates overall prepayment speeds to the point that this measure is of limited use in judging the prepayment environment.
2. **CCPR:** A CPR that corrects pool prepayments for paid out excess, resulting in a prepayment measure that is lower than the ACPR. This measure of prepayment also adds back the excess to the trading balance and tracks it separately over time.
3. **LCPR:** A loan level CPR, which utilizes the underlying loan balances in the calculation instead of the corrected pool balances. It uses the same prepayment amounts as the CCPR measure. Since actual loan balances are lower than the pool balances, this measure is higher than the CCPR, but lower than the ACPR.

GLOSSARY AND DEFINITIONS: PAGE 10

Prepayment Calculation Explanations (continued)

Our loan size prepayment analysis is based on the guaranteed balance of all pooled loans when they were sold into the Secondary Market. The analysis is twofold, in that we divide each loan into our six maturity buckets and then into one of eleven loan size buckets. These loan size buckets are defined as: <250,000, 250,000 to 500,000, 500,000 to 1MM, 1MM to 1.5MM, 1.5MM to 2MM, 2MM to 2.5MM, 2.5MM to 3MM, 3MM to 3.5MM, 3.5MM to 4MM, 4MM to 4.5MM and +4.5MM.



Government Loan Solutions, Inc.

1741 Tiburon Drive
Wilmington, NC 28403

Phone: 440-829-8413

Email: rjudge@govloansolutions.com

Our Staff:

Bob Judge, Editor

Scott Evans

Brianna Harrison

Robert E. Judge II, Production Assistant

Government Loan Solutions, Inc. (GLS) was founded by three former Bond Traders in Cleveland, OH. Our current partners possess a combined 60 years experience in the institutional fixed income markets, 40 of which are in the loan securitization business. GLS formally began operations in January, 2007 and became a wholly-owned subsidiary of Live Oak Bancshares in September, 2013. Our mission:

“The purpose of Government Loan Solutions is to bring greater efficiency, productivity and transparency to small business lending. Through the use of proprietary technology, we aid lenders in all aspects of their small business lending, help loan securitizers be more productive in their operational procedures and provide quality research to the small business lending industry.”

www.govloansolutions.com

Government Loan Solutions' CPR Report is a monthly electronic newsletter distributed by Coleman Publishing. The opinions, unless otherwise stated, are exclusively those of the editorial staff. This newsletter is not to be reproduced or distributed in any form or fashion, without the express written consent of Coleman or Government Loan Solutions. Government Loan Solutions' CPR Report is distributed in pdf format via e-mail. The subscription to the Government Loan Solutions' "CPR Report" is free to all members of the small business lending community.

To subscribe, please contact Bob Judge at 440-829-8413 or via email at: rjudge@govloansolutions.com

EDITORIAL DISCLAIMER

DISCLAIMER OF WARRANTIES – GOVERNMENT LOAN SOLUTIONS (GLS) MAKES NO REPRESENTATIONS OR WARRANTIES REGARDING THE ACCURACY, RELIABILITY OR COMPLETENESS OF THE CONTENT OF THIS REPORT. TO THE EXTENT PERMISSIBLE BY LAW, GLS DISCLAIMS ALL WARRANTIES, EXPRESS OR IMPLIED, INCLUDING BUT NOT LIMITED TO IMPLIED WARRANTIES OF MERCHANTABILITY AND FITNESS FOR A PARTICULAR PURPOSE.

Limitation of Liability - GLS shall not be liable for damages of any kind, including without limitation special or consequential damages, arising out of your use of, or reliance upon, this publication or the content hereof.

This Report may contain advice, opinions, and statements of various information providers and content providers. GLS does not represent or endorse the accuracy or reliability of any advice, opinion, statement or other information provided by any information provider or content provider, or any user of this Report or other person or entity. Reliance upon any such opinion, advice, statement, or other information shall also be at your own risk.

Prior to the execution of a purchase or sale or any security or investment, you are advised to consult with investment professionals, as appropriate, to verify pricing and other information. Neither GLS, its information providers or content providers shall have any liability for investment decisions based upon, or the results obtained from, the information provided. Neither GLS, its information providers or content providers guarantee or warrant the timeliness, sequence, accuracy, or completeness of any such information. Nothing contained in this Report is intended to be, nor shall it be construed as, investment advice.